



**LoadMaker.** Highly durable product. Excellent memory characteristics, 75mm thickness. Long life. Can be refurbished at mid life. Options; 12 or 24 volt fan kit plus return vent, wings, polar wear strip, cuffs, restraint straps, wear plates, kick plates, cut outs for meat rails or internal door. Available as stow in roof, bi-fold, center-fold, plug or complete with lift and stow system.



**Flexiplus II.** Budget price flexible bulkhead . Options as above except meat rails. Available in stow in roof, bi-fold, center-fold. Simple stowage strap available.



**CargoLite.** Developed for panel vans, 50mm thickness. Options; fan kits plus return vent, wheel arch flaps, restraint straps, polar wear strip.



**Paint Facility.** In house paint facility can paint any standard RAL colour required by customer. Non RAL colours can also be applied. Manufacturers 5 years warranty\*. Environmentally safe full waterborne system available. \*subject to paint manufacturers terms and conditions.



**LockerLite.** 12 or 24 volt low voltage, low current consumption, long life LED lights for illuminating stowage lockers.



**StepLite.** 12 or 24 volt low voltage, low current consumption, long life LED lighting system fitted into aluminium step profile for outlining entry/exit steps in vehicles.



**EdgeLite.** 12 or 24 volt low voltage, low current consumption, long life LED edge profile lighting system fitted into bespoke aluminium profile to highlight vehicle deck perimeters.



**G-Rail system.** The Premium support product second decking system. Increases and maximises cubic capacity, utilising virtually all available space in body.



**Hatcher.** National distributor for Hatcher aerodynamic products for commercial vehicles.

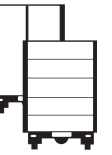
**Service/Spares Agents**

Nationwide network of agents, in excess of 100, offering 24/7 outwork facilities. Spare parts orders processed prior to 12.00 mid-day despatched same day\*. Manufactured spare parts despatched within 48 hours of order\*\*.

\*subject to availability.  
\*\*subject to colour specification.

Flexible Bulkheads

Other Products



*Innovation on the move*

**JR INDUSTRIES LTD**

Caxton Place, Pentwyn, Cardiff CF23 8XN, United Kingdom.  
Tel: +44 (0) 29 2054 9966 Fax: +44 (0) 29 2054 9046  
e-mail: sales@jrindustries.co.uk  
or visit our website at [www.jrindustries.co.uk](http://www.jrindustries.co.uk)

All products produced by JR Industries carry ISO 9002 quality accreditation gained in December 1988.



All products produced by JR Industries carry ISO 9002 quality accreditation gained in December 1988.

**THE SPECIALIST MANUFACTURER OF ROLLER SHUTTER DOORS & FLEXIBLE BULKHEADS TO SUIT ALL TYPES OF COMMERCIAL VEHICLES.**

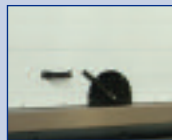
We manufacture the most comprehensive range of roller shutter doors and flexible bulkheads in Europe. Three factories in UK and one in France serve the entire European body building industry.

Additionally we have a nationwide network of agents, most offering 24/7 repair facilities using genuine replacement parts. An extensive European agency network offers repair facilities in France, Spain, Portugal, Germany, Benelux and Sweden.

*Product Range*



**Whiting ColdSaver.** 60mm thick aluminium extrusion panel construction, CFC free foam insulation, aluminium continuous hinge, stainless steel fittings, silent running, finger guard protection, twin spring balancer. White/White standard.



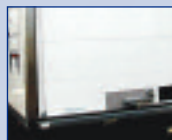
**Whiting TS50 SafeGuard.** 50mm thick aluminium extrusion panel construction, CFC free foam insulation, stainless steel hinges and fittings, silent running, finger guard protection, twin spring balancer. White/White standard. \* Available with pneumatic operation.



**Whiting TS50C.** 50mm thick aluminium extrusion panel construction, CFC free foam insulation, aluminium continuous hinge, stainless steel fittings, twin spring balancer. White/White standard.



**Whiting TS50.** 50mm thick aluminium extrusion panel construction, CFC free foam insulation, twin spring balancer.



**Mobile Doors K32.** 60mm thick folded aluminium panel construction, CFC foam free insulation, silent running, finger shield protection, single spring balancer. \* Available with pneumatic operation. White/White standard.



**Whiting Dry Freight.** 7 ply Simpson WBF wood, tongue and groove panels, twin spring balancer. Choice of pre-primed or pre-painted panels. Lock options.



**Whiting Excel.** 7 ply Simpson WBF wood, aluminium continuous hinge, twin spring balancer. Choice of pre-primed or pre-painted panels. Lock options.

Insulated.  
(All suitable for bodies requiring ATP class C certificate)

Dry Freight.



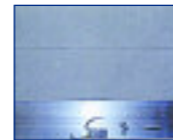
**Whiting Hybrid.** As per Whiting Excel with option of one or two aluminium lower panels. Choice of pre-primed or pre-painted panels. Lock options.



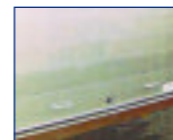
**Mobile Doors Access Fingershield.** 11 Ply Koski WBF wood, fingershield panels, silent running, single spring balancer. Choice of pre primed panels, laminate outer face or pre painted. Lock options.



**Mobile Doors Access Fingershield.** c/w Composite Continuous hinge. As above but with continuous hinge. Choice of pre primed panels, laminate outer face or pre painted. Lock options.



**Mobile Doors Parcel Panel.** Mobile access fingershield with option of one or two aluminium lower panels. Choice of pre primed panels, laminate outer face or pre painted. Lock options.



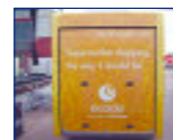
**Mobile Doors Aluminium Wide Slat.** Hollow box aluminium panels c/w composite continuous hinge, single spring balancer. Can be mill, painted or powder coated finish. Lock options.



**Whiting Continental 3.** Hollow box aluminium construction. High strength (Deutsches Bahn approved). Low maintenance. Water tight. 2" or 1" track system. Twin spring balancer. Mill, paint or powder coat finish option.



**Toughlight.** Single skin aluminium construction. Continuous hinge. 25% lighter than wooden equivalent. Strength for strength similar to wooden shutters. Twin spring balancer. Mill, paint or powder coat option. Choice of locks, including slam lock.



**Coollight.** Anodised aluminium inner panel, White UPVC exterior panel, Styrofoam insulation bonded to panels. 30% lighter than conventional insulated shutters. Suitable for vehicles carrying chilled product. Twin spring balancer. Choice of locks, including slam lock.



**Robinson 57 Series.** 57mm deep single skin aluminium slat. Available in roll, roof or roof/roll format. Wide range of locks. Can be mill, painted or powder coated finish. Available with air operated, fail safe central locking.



**Robinson 34 Series.** 34mm deep hollow box construction aluminium slat. Interseals between slats. Waterproof (when fitted with all seals). Available in roll, roof or roof/roll format. Wide range of locks. Can be mill, painted or powder coated finish. Available with air operated, fail safe central locking.

Dry Freight. (cont)

Intermodal

Lightweight

Aluminium Roll Type