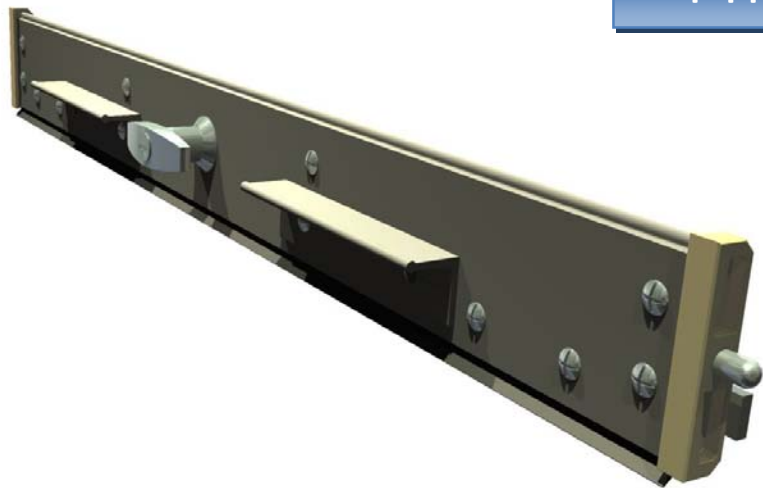




Specification Drawings

T Handle Lock

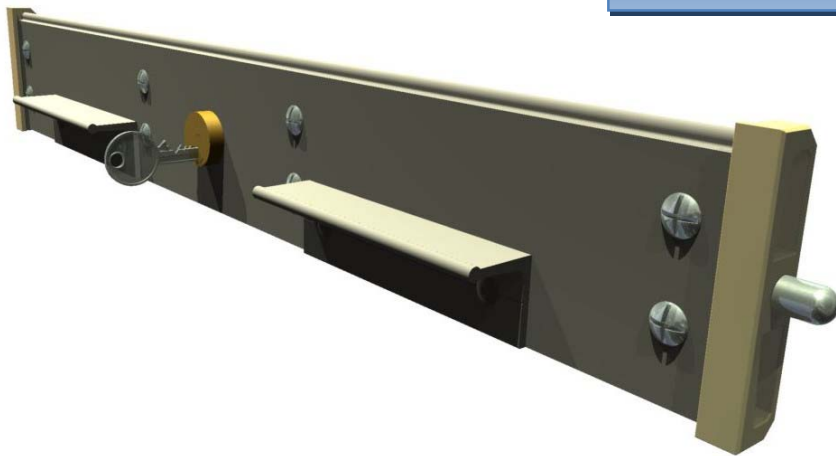


Front View



Rear View
(Cover Guard Removed)

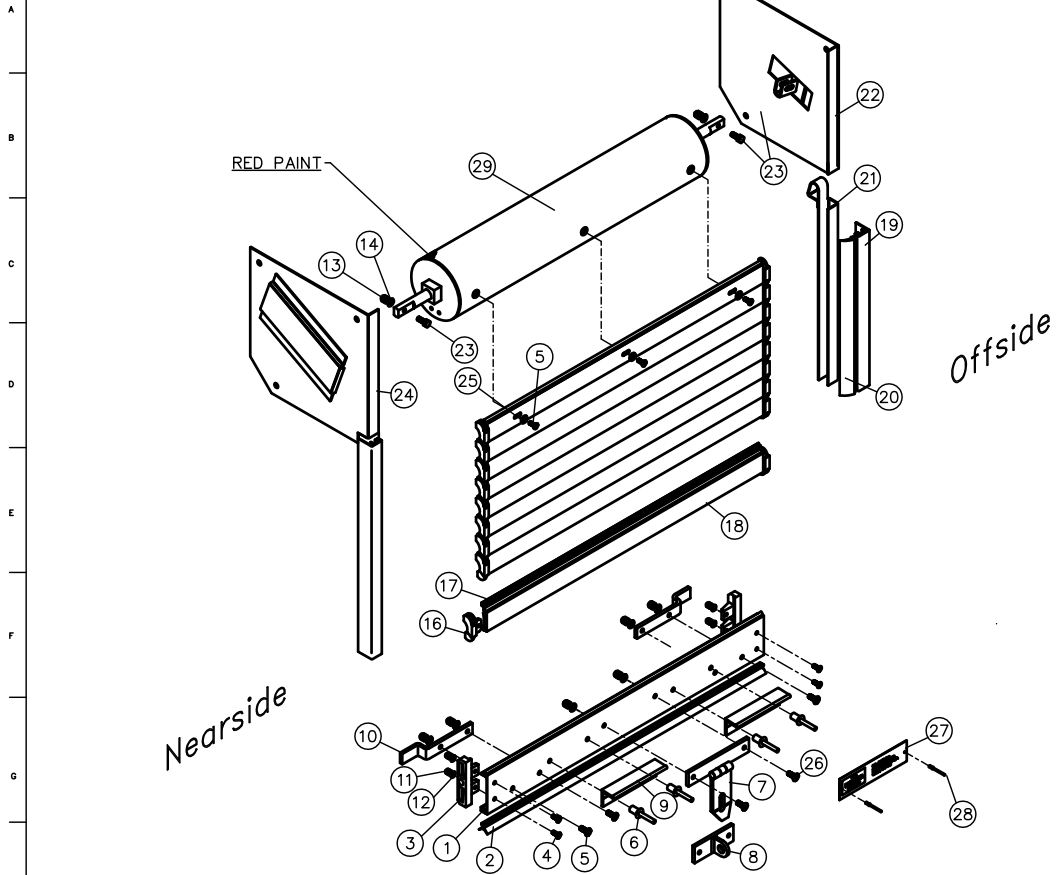
Espagnolet Lock



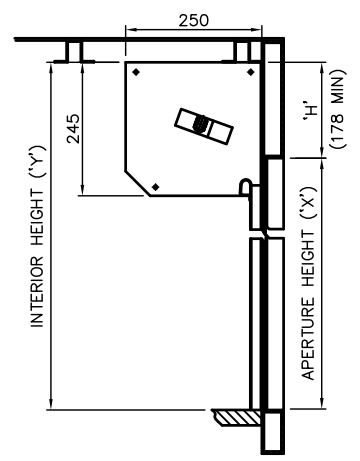
Front View



Rear View

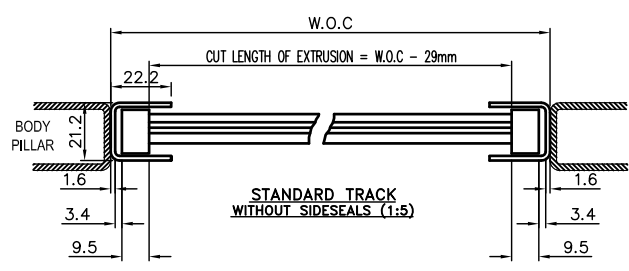
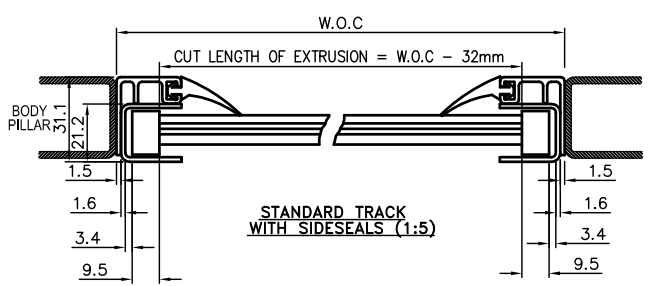


QTY	REF	DESCRIPTION	PART NUMBER	MATERIAL SPEC, ETC	DWG NUMBER
1		34 SERIES BOTTOM RAIL (MILL FINISH)			R 371
		34 SERIES BOTTOM RAIL (ANODISED)			
2		BOTTOM SEAL (NEOPRENE)	3020000013550		R 13
3		BOTTOM BLOCKS (NYLON)	3020000010660		R 383
4		M5 x 16 MUSH HEAD BOLT	302-050160001		
5		M6 x 16 MUSH HEAD BOLT	302-060160001		
6		4.8 x 14.6 STAINLESS STEEL RIVET	302-100760000		
7		HASP ASSEMBLY	3020000040100		R 44
8		STAPLE ASSEMBLY	3020000040200		R 44
9		FINGER PULL (ALUMINIUM)	3020000010400		R 5
10		STOP BRACKET (GALVANISED)	3020000010800		R 45
11		M5 AEROTIGHT LOCKING NUT	302-005000000		
12		M5 WASHER	302-100610000		
13					
14					
15		RIVET 3/16" x 1/4" OVAL PT NR6	302-100700000		
16		34 SERIES END SHOE (NYLON 66)	3020000034040		R 24
17		34 SERIES SLAT INTERSEAL	302000004002A		
18		34 SERIES SLAT (MILL FINISH)	302000003400B		
		34 SERIES SLAT (ANODISED)	302000003400A		R 58
19		SIDE SEAL CARRIER (MILL FINISH)	3020000013700		
		SIDE SEAL CARRIER (ANODISED)	3020000013701		R 7
20		SIDE SEAL (NEOPRENE)	3020000013600		R 10
21		SHUTTER GUIDE CHANNEL	3020000030100		R 2
22		OFFSIDE PENNANT PLATE	3020000030201		R 19
23		M6 x 25 HEX HEAD BOLT	302-060250000		
24		NEARSIDE PENNANT PLATE	3020000030200		R 19
25		M6 CRINKLE WASHERS (BERRILLIUM)	302-100360000		
26		M6 x 25 MUSH HEAD BOLT	302-060250001		
27		NAMEPLATE	3020000010900		
28		1/8" AVEYX RIVET	302-100710000		R 823
29		BALANCER ASSEMBLY			



NOTES:

- ① LEFT & RIGHT HAND ARE VIEWED FROM OUTSIDE OF VEHICLE
- ② FOR LOCK OPTIONS SEE DWG. R 498
- ③ FOR BALANCER ASSEMBLY SEE DWG No. R 823



ISSUE	DRAWN	CHKD	DATE	MOD. NO.	MODIFICATION
9	MD		27.03.01		ITEM 6 AMENDED, 13 & 14 REMOVED
8	KH		13.10.00		ITEM 2 PART NO AMENDED
7	KH		24.8.00		DRAWING AMENDED FOR DXF FORMAT
6	AS		14.10.98		BALLOON REF AMENDED 29 WAS 31
5	MM		04.03.98		BALANCER ASSEMBLY MOVED TO DWG No. R 823
4	MM		21.10.97		BORDER SIZE CHANGED
3	KH		6.5.97		PART NOS AMENDED
2	SB JAE		27.06.96		ITEM 34 WAS Pt.No.3020000021210
1	KH		23.11.93		FIRST ISSUE

ALL DIMENSIONS IN MILLIMETERS UNLESS OTHERWISE SPECIFIED ALL SHARP EDGES TO BE DEBURRED		COMPUTER PART No. _____ PROJECT _____ SCALE NTS																								
IF IN DOUBT ASK! DO NOT SCALE	THE TOLERANCE ON DIMENSIONS FOR WHICH NO LIMITS ARE GIVEN SHALL BE AS SHOWN BELOW	TITLE EXPLODED VIEW OF A ROBINSON ROLL TYPE SHUTTER C/W HASP & STAPLE DRAWING No. R 497 SHEET OF																								
<table border="1"> <thead> <tr> <th>NOMINAL SIZE</th> <th>LOWER</th> <th>0</th> <th>6</th> <th>30</th> <th>120</th> <th>400</th> <th>1000</th> </tr> </thead> <tbody> <tr> <td>MACHINED</td> <td>±0.2</td> <td>±0.5</td> <td>±0.8</td> <td>±1.2</td> <td>±2</td> <td>±3</td> <td>±3</td> </tr> <tr> <td>FABRICATED</td> <td>±1</td> <td>±1</td> <td>±1.5</td> <td>±2</td> <td>±3</td> <td>±4</td> <td>±4</td> </tr> </tbody> </table>	NOMINAL SIZE	LOWER	0	6	30	120	400	1000	MACHINED	±0.2	±0.5	±0.8	±1.2	±2	±3	±3	FABRICATED	±1	±1	±1.5	±2	±3	±4	±4	j Industries J.R. INDUSTRIES LTD CAYTON PLACE, PENTWYN, CARDIFF, S. GLAM. CF23 8XN TEL. (01222) 549966 FAX (01222) 549046 THIS DRAWING AND COPYRIGHT THEREOF ARE THE PROPERTY OF J.R. INDUSTRIES LTD. AND MUST NOT BE REPRODUCED IN PART OR WHOLE OR PASSED ON TO OTHERS WITHOUT PERMISSION.	DRAWING SIZE A1 841mm x 594mm
NOMINAL SIZE	LOWER	0	6	30	120	400	1000																			
MACHINED	±0.2	±0.5	±0.8	±1.2	±2	±3	±3																			
FABRICATED	±1	±1	±1.5	±2	±3	±4	±4																			

ROBINSON SHUTTERS LIMITED

Registered Patent No. 144961

ROLL CLOSE GAP TYPE

FITTING INSTRUCTIONS

Users are reminded of their obligation to ensure that all persons involved in handling, installing, using or disposing of our products are made aware of these notes and that sufficient information is passed on to your customer to comply with the Act/1974.

In particular, note that in no circumstances should the vehicle to which the shutter is fitted be driven or be in motion at all with the shutter in the open position. A notice to this effect is printed on the identification plate and this should not be obscured by paint but be left clearly visible at all times.

A FITTING THE CHANNELS

- 1) Mount the channels in the body to the measurement 'Width over channels' given on the label affixed to the channels. This will give a measurement $\frac{3}{8}$ " (9mm) greater than the total width of the curtain over the nylon shoes.
- 2) Ensure that the channels are securely fixed square to the structure, vertical and parallel to each other.
- 3) The Hanger Brackets/Pennant Plates are integral with the channels and must be secured at their top inboard edge, at 90° to the body structure. Check that the closure slide in each pennant plate moves freely in its slot.

B FITTING THE OPERATOR

- 1) Detach the stop brackets from each end of the operator shaft - they are only attached there for despatch purposes. See ---- C3.
- 2) The spring drum is supplied pre-tensioned. The tension is held by a pin through the hub of the off side drum end cap. Do not remove this pin until the curtain is fitted. See ---- C4.
- 3) Mount the operator in position by placing the flatted ends of the shaft in the 'U' pieces that are welded to the closure slides.

C FITTING THE CURTAIN

- 1) Pass the curtain, Bottom Rail first, over the operator into the channels and lower it into the closed position.
Note:- if necessary to facilitate passing the curtain beneath the header panel, the Finger Rail can readily be detached from the Bottom Rail and refitted when the curtain is in position.
- 2) Attach the curtain to the operator, bolting through the slots in the top slat with the bolts already in position in the drum.
- 3) Bolt a stop bracket at each end of the Bottom Rail locating in the holes provided. These brackets arrest the curtain in the fully open position by coming into contact with the built-in stops at the top of the channels.
- 4) Remove the pin from the off side drum end cap and the curtain is operational.

D TENSION

- 1) Should it be found necessary to either increase or decrease the spring tension, this is easily done without removing the curtain or the spring shaft, as follows;
- 2) With the curtain in the 'Down' or 'Closed' position, replace the shaft locking pin in the off side drum end cap.
- 3) Remove the screws securing the curtain to the drum.
- 4) With the aid of two $\frac{9}{16}$ " (26mm) open-ended spanners applied to the squared ends on the drum caps, hold the tension at one end and remove the locking pin. With a spanner at each end apply or release quarter turns to increase or decrease tension as required.
- 5) Replace the locking pin and re-attach the curtain to the drum.
- 6) Remove the locking pin and the shutter is operational.

E FASTENING

- 1) Standard fastening is with Hasp and Staple. Normal practice is to fix the Hasp on the lower edge of the Bottom Rail of the shutter and the Staple on the body structure. But where specified or required, the Finger Rail can be fitted to the upper edge of the Bottom Rail to enable the Staple to be fitted on the Bottom Rail and the Hasp to the body structure.
- 2) IMPORTANT: Under no circumstances must the Finger Rail be cut away to accommodate either the Hasp or Staple as this would have detrimental effect on the strength of the Bottom Rail.
- 3) When Transverse or Slam locks are specified the vertical channels have specially designed wearing pads embodied on the rear face which require recessing into the body pillars, but on no account must these be removed.

H LUBRICATION

- 1) Oil or grease should not be used in the shutter channels.
- 2) We recommend the use of CRC 5.56 as the best shutter lubricant.

SOLE DISTRIBUTOR FOR 'ROBINSON' SHUTTERS IN EUROPE IS:

JACK ROBINSON SUPPLIES (CARDIFF) LTD.

Caxton Place, Pentwyn,
Cardiff,
South Glamorgan CF2 7XN.

Telex: 497634
Telephone: (0222) 549966