



**Counter rotating Rescue saws
Ultra sharp - Reactionfree - Versatile**



When it gets:

-chaotic

- dogged

-shaky

- tough



Catalogue 2011/12 TwinSaw

Characteristics- Skills – Comparison

2

TwinSaw CRE 2326 Electrical Saw

4

TwinSaw CRF-Series Gasoline Saws

6

Accessories/ spare parts

8

Former models Wimutec 2747/ CDC 2224/ 2530

9

Courses and training

11

Inquiry and order form TwinSaw

13

Other products

14

This catalogue is given by:

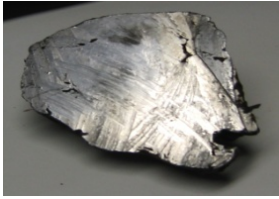


Now separate concrete, stone and massive glass with the TwinSaws

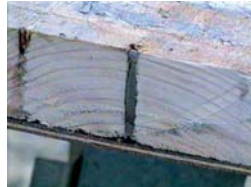
Characteristics	<p>Two circular saw blades with identical diameter are running on each other in counter direction and create one single cut</p> <ul style="list-style-type: none"> - Reaction free separation, the effects of the one blade is compensated by the other - Separation in any direction and any situation - Kick-back free penetrations into any kind of surface - High definition cutting directly beside persons - Ultra sharp cutting, even the finest materials can be cut, e.g. side crash protection - Planfull working for secure success - Cutting all materials and material combinations - Separation of abrasive material with single blade operation
Applications Rescue	<p>To be used , where you have to separate</p> <ul style="list-style-type: none"> - close to people - different types of materials in combination - where all other tools are over forced and limited - where it is rather difficult to cut - where you have to penetrate into surfaces - where you have to separate mechanically
Application industry and craftsmen	<p>To be used in these areas, where you have to separate</p> <ul style="list-style-type: none"> - where a continuously running production process does not allow a stop - where after-work on the cut edges is expensive - where material combinations must be separated - Where you have to work especially safe and secure.

Rescue	Main tool for cutting	Position and duties of TwinSaws	Recommended
Car-accident-rescue/ Truck-rescue	Hydraulic cutters and spreaders,	Side crash protection of cars; Quickest separations	<i>Electrical saw CRE 2326 Set Civil Defense</i>
Bus-/ Train-/ Aircraft- / Truck-Rescue	TwinSaw	Openings in vehicle bodies Excavating clamped persons	<i>Electrical Saw CRE 2326 CRE 2326 Set Train Rescue</i>
Earth Quake/ house collapsing	TwinSaw with concrete kit	all separations	Gas saws CRF 3226-4030 Set Allround
Storm disaster	Chain Saws	Helping cuts; material mixtures	Gas saws CRF 3226-4030 Set Civil Defense
Roof openings ventilation holes	HM-Chain saw with water	Helping cuts; material mixtures	Gas saws CRF 3226-4030 Set Civil Defense
All kind of cutting applications	TwinSaw	Separating all kinds of materials with one tool in double blade and single blade operation	Both electrical and gas types CRE and CRF

Comparison and Cooperation's	Characteristics	Limits	TwinSaw-Cooperation
Hydraulic- cutters and - spreaders	Burst the materials No. 1 at working directly beside persons, no flukes, low noise, cold	These tools need to be able of pushing cut material aside- So side crash protection is a limit	TwinSaw separates all materials and is best for side crash protections
Angle Grinders	Grinding- micro tips hit material and loose small pieces from the surrounding material	Most fluking and most dust	TwinSaw substitutes angle grinders
Chain Saws	Ripping –tips are ripping big parts from the material Highest cutting depth	Only homogeneous materials; Sensible to side pressure and	Vibrierende und wechselnde Materialien
Plasmabrenner	Electrical welding with high temperatures- welds almost everything	Sets fire on every material; No wood or flammable materials	TwinSaw substitutes the plasma in rescue applications
Tiger saws, sable saws	Ripping- long and thin blades; Cuts in small edges and around a corner	Limited in power and cutting force Not capable of separating vibrating materials Saw blades fixed to special materials	Partner of TwinSaw for close separations



lead –with much lubrication



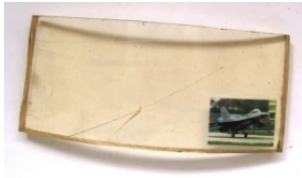
Wood with nails



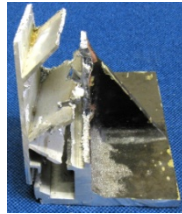
Bitumina/ tar- with much water



Plastic- with many backtracks



Acryl and other hard plastic



Aluminum profiles- trains and aircrafts



Steel and iron
Long cuts max. 20mm thickness



Composites- no problem



Carbon fibre-



Ultramodern Composites



Side crash protection



Cutting protection works



Concrete and stone with special blades



Thick glass – with diamond single blade



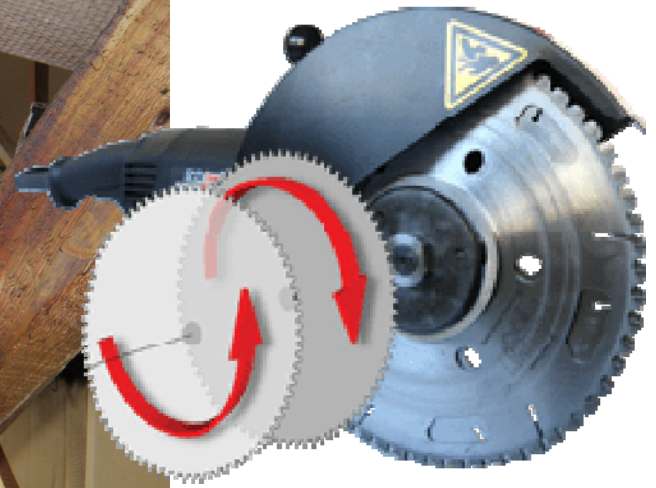
Steel in rubber
Slow but successful



Single wires in rubber-
Better is to pinch

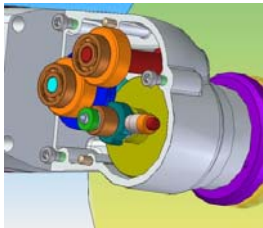
Cutting achievements of TwinSaw in different materials

Material,	hardness appr.. N/mm ²	Tip cutting depth x 0,001 mm	Rec.max. thickness mm	Cutting speed in cm/s	Characteristics of Separation
Rubber	100	5,60	40	5	Many backstrokes
Lead	150	5,60	80	10	Much lubricant
Weak plastic	180	5,50	80	10	Many backstrokes
Bitumen/ tar	220	5,40	20	5	Much water (10l/min)
Weak wood	200	5,40	50	15	Slow, if you cut n direction of growing
Plasterboard	250	5,20	20	20	Dust
Alumina	280	4,90	40	10	Much lubricant
Polycarbonat	300	4,80	40	10	Many backstrokes
Wood med.hard	360	4,50	50	8	
Metal sheets	450	4,20	4	10	Avoid vibrations
Copper	480	3,80	8	8	
Steel, iron	620	3,20	30	4	Limited thickness
Stainless steel	900	2,10	20	2	
Tool steel	1200	1,50	20	1	
Titan	1800	0,75	20	1	
Material abrasiv					
Glass	950	3,5	10	4	Single blade
Bullet proof glas	1250	2,5	40	1	Single blade
concrete	750	2,0	80	1	Single blade

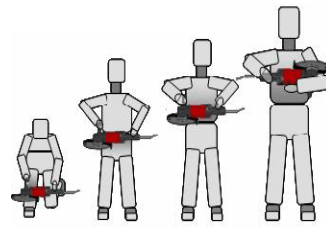


Born for the Chaos- the TwinSaw CRE 2326

Bad Reichenhall (2006), Transrapid 2006 and many other disasters have evidence of the uniqueness of this separation Technology stored. Only the TwinSaw is able to consist and to do all separation tasks clean and safe even within the worst chaos. With the new additional equipment even abrasive materials such as stone, concrete, glass tanks can be cut.



Flat gear for high Reliability and permanent load



Training for safe handling and performance at www.twinsaw.de



Cutting in all positions offered by recoil free cutting



NEW!!! Concrete cutting operation with a single blade

Technical Specifications TwinSaw CRE 2326

Type	Hand-held, electric, counter-rotating twin blade saw
Motor	2300 Watt 230V/50 HZ (110Volt optional)
Rotation speed, cutting speed	1900 rpm tips:-v: 25 m/s
Transmission	Flat wheel – five axes transmission patented
Cutting depth	65 – 110 mm
Double blade operation	Wood, bitumen, aluminum, steel sheet, steel, stainless steel, plastic, GFK, Carbon fibre,
Single blade operation	Concrete, stone, glass tanks, massive plastics
Blades	Doppelblatt-Betrieb 210-280mm HM-bestückt
Trennblätter	Single blade operation Diamant 300mm Segmente
lubrication	internal, half automatic lubrication system
Weight	6,8 kg without, 8,4 kg with blades
Connection	5m cable



Art.-Nr. 1 2326 260

TwinSaw CRE 2326 Basis

Counter-rotating Rescue Saw
Basic Set with a pair of saw blades

Delivery contents:

- Saw 2300 Watt 230V/ 50 Hz, 110 V optional
- Equipment Operating instructions; CD;
- Tool Inbus 150 x 3; Maulschlüssel M24 einseitig
- Spare Parts 6 Stück Blattschrauben M3x12 10.9
- Lubricant 1 l Cool+ Universal lubricant
- Package Carton; Bag
- Blades 1 pair CMB 260/ 66Z HM 90mm depth of cut

Our equipment recommendations (all contain the products of the basis sets)

Application	Suggestion Set Art.-Nr.	Included additional	Tasks	Supplement
Cutting free of persons	12326520 with 2 pair CMB 260	Without	General technical assistance	Alubox (12326556) ToolCarry (15110600)
Create Roof openings	12326525 with 2 pair CMB 260	Cover with water supply	Separation roof openings with Bitumen edition	Rescue Saw with HM-mounting
VU- Car/Truck	12326520 with 2 pair CMB 260	Without	Support Hydraulic – separation Side impact protection Relaxation cuts	Alubox (12326556) ToolCarry (15110600)
Bus rescue	12326730 with 2 pair CMB 260 1 pair CMB 210	Small cover 235 Art.-Nr. 10235 420 For narrow cuts	Separation side walls, Roof, floor; sections Interior	Art.-Nr. Accu recipro saw Makita BJR 1600 with Ers.-battery
Train rescue	12326800 with 4 pair CMB 260 1 pair CMB 210	Small cover 235 Art.-Nr. 10235 420 Alubox	Separation side walls, Roof, floor; sections Interior	Art.-Nr. Accu recipro saw Makita BJR 1600 with ext. Accu
Earthquake, Building collapse	1 2326950 with 2 pair CMB 260 1 piece, TSD 300 (Set All-round)	Large cover with water supply Specific adapter Aluminum case	Create entrances and cutting free trapped persons	ICS Stone-chainsaw

Do you want to be prepared for all tasks? We recommend:

Art.-Nr. 1 2326 950

TwinSaw CRE 2326 SET ALLROUND1 2326 800
TwinSaw CRE 2326 Allround

Complete the electrical equipment,
counter-rotating twin-sheet Rescue
for the separation of separable materials

- Lieferumfang Saw and equipment as above;
package: aluminum case
- Applications General technical assistance
Earthquake, Train rescue etc.

delivered blades
Pair 1: mounted
CMB 260Pair 2:
replacement
CMB 260Blade 3:
Diamond-bladeExtensions
ToolCarry
Art.-Nr.:
15110600

Versatility – Mobility – Safety



The achievements of modern materials developments
 Are always new challenges to the performance of the available
 separation techniques in the rescue.
 Which can produce and develop only a few specialists, have many,
 who cannot be a specialist, always disconnect and in any case.
 There is only one technique that helps in any case and secure:

Counter rotating TwinSaw- rescue saws



NEW!
 Change in minutes from double-
 blade- to single- blade operation, to
 cut stone, concrete and other
 abrasive materials.
 That is the versatility we talk about.
 All materials with only one device!

The double-blade fuel-saws of the CRF series increase your mobility additional even in inaccessible areas. You need only one device to cut everything in a safe way. Also unskilled people are able to handle it.

Typ CRF 3226 CRF3428

Art.-Nr. -area	1 3226 ...	1 3428 ...
		

With only one hand		
Motor	3,2 kW/ 4,3PS 2-Takt 1:50	3,4 kW/ 4,5 PS 2 Takt 1:50
Rpm motor max./ blades	9420/ 1950 U/min rpm	9250/ 1920 U/min rpm
Diameter of blades	210 – 260 mm	235-280 mm
Cutting rech blades	55 – 90 mm	78 – 100 mm
Tank capacity fuel/ lubricant	0,75 / 0,40 l	0,75/ 0,40 l
Total weight	12,8 kg	13,8 kg

Art.-Nr. 1 3226 260

TwinSaw CRF Basis set



Counter rotating double- blade rescue saw, fuel for operation, with paper rolls
 Basic set with a pair of Saw blades
 Delivery contents:
 Saw 3,2 kW, 4,3 Hp 1:50 gasoline engine with TwinSaw- transmission
 Equipment Operating instructions; CD;
 Tool Allen 150 x 3;jaw spanner M24 one-sided
 Spare Parts 6 pcs blade screws M3x12 10.9
 lubricant 1 l Cool+ Universal lubricant
 Package Carton; bag

Blades
 3226: 1 Pair CMB 260/ 66Z HM 90mm depth of cut
 3428: 1 Pair CMB 280/72 Z HM 100 mm depth of cut
 4030: 1 Pair CMB 310/78 Z HM 110 mm depth of cut

Our equipment recommendations (all contain the products of the basis sets)

Application	Suggestion Set Art.-Nr.	Included additional	Tasks	Supplement
Cutting free of persons	13226520 2 Pair CMB 260 13480520 2 Pair CMB 280 14130520 2 Pair CMB 310		General technical assistance	Alubox (13226556) ToolCarry (15110600)
Create Roof openings	13226520 2 Pair CMB 260 13480520 2 Pair CMB 280 14130520 2 Pair CMB 310	Cover with water supply	Separation roof openings with Bitumen edition	Rescue Saw With hard metal equipping
VU- Pkw/Lkw	13226520 2 Pair CMB 260 13480520 2 Pair CMB 280 14130520 2 Pair CMB 310		Support Hydraulic – separation Side impact protection Relaxation cuts	Alubox (13226556) ToolCarry (15110600)
Bus rescue	13226730: 2x260; 1x210 13480730: 2x280; 1x210 14130730: 2x310; 1x210	Small cover 235 Art.-Nr. 10110235	Separation side walls, Roof, floor; sections Interior	Art.-Nr. Accu-recipro saw Makita BJR 1600 with ext.-Accu
Train rescue	13226800: 4x260; 1x235 13480800: 4x280; 1x235 14130800: 4x310; 1x260	Small cover 235 Art.-Nr. 10110235 Alubox	Separation side walls, Roof, floor; sections Interior	Art.-Nr. Accu- recipro saw Makita BJR 1600 mit Ers.-Akku
Earthquake, Building collapse	13226900: 3x260; 2xTSB 13480900: 3x280; 2xTSB 14130900: 3x310; 2xTSB TSB = Trennscheibe 300mm	Large cover with water supply Specific adapter	Create entrances and cutting free trapped persons	

The equipment used for all tasks:

Art.-Nr. 1 3226 900
 Art.-Nr. 1 3428 900
 Art.-Nr. 1 4130 900

TwinSaw CRF-GAS SAW SET ALLROUND

Complete equipment of fuel saws for all materials



Delivery content Saw and supplies as stated above;
 Packing: Alubox with concrete kit
 Application field General technical assistance
 Earthquake, train rescue...
 Containing saw blades



CMB 260



CMB 260



TSB 300

amplifications



ToolCarry

The equipment for all applications

DOUBLE-SHEET BLADES OF USE

ST= Schnitttiefe



The TwinSaw saw blades with diameters between 210 and 310mm are specially designed for the twin blade saws and manufactured. Their characteristics:

- Curvature and tension balance over the entire body stock with support only in the teeth
- Special Carbide and negative rake angle for excellent stability disconnect and hard materials
- Generous ventilation areas
- Quick-change system
- Universal for all types of cutting material
- Resharpenable (all carbide sharpening operations)

Art.-Nr.	ME	Product	2326	3226	3428	4030	Listenpreis/ME
1 1210 100	Pair	CMB 210 SAW BLADES FOR USE Special-SB D=210 mm/54 HM-Z; Quick Change	000	000	00	0	€293,00 1,20 kg
1 1235 100	Pair	CMB 235 RESCUE SAW BLADES FOR USE Special-SB D=235 mm/60 HM-Z; Quick Change	000	000	00	0	€320,00 1,20 kg
1 1260 100	Pair	CMB 260 RESCUE SAW BLADES FOR USE Special-SB D=260 mm/66 HM-Z; Quick Change	000	000	00	00	€340,00 1,50 kg
1 1280 100	Pair	CMB 280 RESCUE SAW BLADES FOR USE Special-SB D=280 mm/72 HM-Z; Quick Change	00	00	000	000	€370,00 1,80 kg
1 1310 100	Pair	CMB 310 RESCUE SAW BLADES FOR USE Special-SB D=310 mm/78 HM-Z; Quick Change	0	0	00	000	€400,00 2,10 kg

Legende

000 very suitable OO good O less good

TRAINING-SÄW BLÄDES

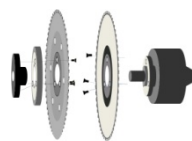
These blades have passed, not one of our many other quality control steps in diameter and again available-please inquire!

1 0235 400

Pair **CST 235 TRAINING-SÄW BLÄDES**

D=235 mm/60 HM-Z; gland;

Middle level, and for all materials, due to sharpen



Shim required

€170,00

1,20 kg

30 x 30 x 2 cm

1 0235 410

Piece **SHIM REQUIRED CST-CMB**

100mm Disc on the use of CST / CSM leaves on the CRE in 2326

€13,80

0,20 kg

SEPERATOR SHEETS FOR CONCRETE+GLASS TANK

1 2326 800

Piece.

Concrete kit for CRE 2326

Special adapter; large cover with water supply
TSB 300 Diamond blade 300mm/ 21 Segments

€258,00

4,50 kg

40 x 40 x 10

1 2300 100

Piece.

TSB 300 Diamondblade

21 Segments for a free flow operating; bore 40-3x8
Concrete, brick, stone, metal inclusions

€120,00

2,00 kg

35 x 35 x 2

EQUIPMENT AND ENHANCEMENTS

1 5110 100

liter

LUBRICANT COOL+, 1 LITRE €

Universal lubricant for all kinds of material
50% biological, 50% synthetically

€24,80

1 3226 556

Pcs.

TWINSAW® RESCUE-BOX ALUMINIUM

Transport box aluminum 92 cm x 32 cm x 46 cm (picture.2)

€279,00

1 5110 600

Piece.

TWINSAW®-TOOLCARRY (Bild 3)

Special harness for cutting tools in disaster sceneries
Harness with high performance spare parts

€149,00

Picture 1: Universal lubricant Cool+



Picture 2: High-quality aluminum boxes with handholds



Picture 3: For lifting and moving heavy loads in use



Mobile separation in the rescue

If a craftsman walking toward a specific separation task, he prepares them carefully. To be approached with our separation problems, where several months too many engineers advise and consul, what method of separation is because of the question. Stand by their side at least very experienced specialists. As we have begun over 15 years, to concern ourselves with the subject of new and cutting in the mobile rescue, we have asked all the available specialists and inform us carefully to understand our own technique and learn to master. Every day we Hear about new separation problems, we must try new daily, sometimes we have encountered while on release issues, where even the specialists found no solution.



And all these and many more responsibilities, the perhaps less experienced rescuers made without warning.

He must solve the problem quickly, safely and **always**. Otherwise, maybe people lose their lives. Or did he endanger himself. The general goal of our training program is, to help the savior so far as possible out of this dilemma.

Target 1: Simplicity in the Foreground

He / She will need all the help and get on for him / her easiest way of the hand, lengthy decision-making processes because it can use at all seriously in the case => need to train accidents, the separation process for large-scale measures as in his course. He may not have long to decide if he, then, is to solve the tasks. Consequence: also the biggest advantages of our technology are demanding that subordinate. So we have all reduced to a minimum: only one speed, oil and type-saw blades but just for everything. Furthermore, all training steps are kept very simple and provided with suitable living comparisons from the daily - jingle, the remind help.

Target 2: Self-confidence

The rescuer must no matter what accident it is called, now have the confidence that he will make him confess that sparkled tasks. Condition for this is that he has seen the steps and the sequences themselves and made knows of and personal experience. The continuous repeat the basic cuts can happen with work sheets of wood, which makes the training affordable

Target 3: Experience respect:

The cutting performance and cutting possibilities with the TwinSaw are outstanding, it is the only device which ultimately separates everything. But that obligation, as most self-critical and objective to look after, where other devices or techniques are easy to use for the rescuers. And if it's just the fact that the rescuer with a different technique has been many years of experience. This will keep the No. 1 hydraulic rescue equipment to rescue the people of the nearby TwinSaw in this area is an important auxiliary device

1. Theory

In this area, the rescuers brought the principles of separating close. This includes a comparative representation of the existing separation techniques. And then a classification of TwinSaw technology in the community of separation equipment. The most important terms are: exciting-rubbing-melting-breaking, tearing cutting. Should be applied in the assessment process which is now, the understanding of these differences is of great importance. What is a texture is the second note, which is mediated. Because these material characteristics intended, separation process which should be used.

2. Practise

Successfully using a separating device, you must know the Savior, how can he suddenly handle with the device. Based on a few basic cuts and simple procedure, he will be in a position to assess, any more complicated situation and to cope. The personal experience is the most important part of training. Basic things like changing the sheets are also included in the training course.

3. Training

The training program is the result of continuous training. With it, we offer the rescuer a way, the knowledge acquired in the training and confidence to refresh and keep alive.



For each chapter there are movies, pictures and presentations, with each instructor can put together your own training. www.twinsaw.de/training/ download

1 0110 100	Training-CD With all the contents of the training, and much more	29,80 €
1 0110 600	Individual training Task Force ca. 2,5 hours Germany Max.20 People, Material and training room d. FW/THW Features, products, development, references Comparison / Use of different techniques TwinSaw- Chainsaw Saber saw - cutters - Hydraulic handling, Cutting with rear extractors, Training instruction Avoid vibration, tips and tricks device knowledge , Maintenance and Service, blade inspection Procedures to deal with special and complex separation tasks in all areas of technical assistance Recommend v. Persons, aid cuts, new impact protection Separation of roofing felt; openings in open vehicles	398,00 €

In the cost approach and departure as well as the providing of trainings device with two Pair Saw blades and includes a training CD for each participating fire department.
Cut material, preferably wooden posts, wooden pallets, and cars are to be made by the fire brigade. Training room with a projector is provided.

1 0110 300	DAY OF ACTION DISTRICT: Mobile separation in the rescue	1.198,00 €
-------------------	--	-------------------

Max.80 persons, material and training areas or spaces with one of the groups involved
Three speakers and trainers in parallel 3 groups.
Duration of the single group with about 1 hour 15 minute break
Total Duration: 08.30 clock - up to about 13.00 clock with breakfast

Station 1	Theory Features, products, development, references Comparison / Use of different techniques TwinSaw- Chainsaw Saber saw - cutters - Hydraulic
Station 2	Practice 1: handling, Cutting with rear extractors, Training instruction Avoid vibration, tips and tricks Device knowledge, Maintenance and Service, blade inspection
Station 3	Practice 2: Comparison / Use of different techniques Procedures to deal with special and complex separation tasks in all areas of technical assistance Recommend v. Persons, aid cuts, new impact protection Separation of roofing felt; openings in open vehicles

In the cost approach and departure as well as the providing of trainings device with two Pair Saw blades and includes a training CD for each participating fire department.
Cut material, preferably wooden posts, wooden pallets, and cars are to be made by the fire brigade. Training room with a projector is provided.

1 0110 100	Special Seminar: Mobile separation in the rescue The dates please refer to our website www.twinsaw.de Max.25 people in Herten, are included: Accommodation and catering in the normal course, Training-CD and certificate of Attendance	198,00 € p. Person
-------------------	---	-------------------------------

Day 1	15:00-18:30 clock
15:00	Welcome– program execution- grouping
15:30	Theory: Separating regions in the rescue– release properties – material properties
17:15	Client equipment – Fundamental cuts – Comparison of different separation methods sections
18:30	Hotel check-in, followed by dinner
Day 2	09:00 bis 12:00 clock
08:00	Breakfast together
09:00	Theory: Separation processes in the event of a disaster
10:00	Coffee break
10:15	Practice: Auxiliary Sections of cars; Train rescue simulation; Training Implementation
12:00	Adoption and handing certificate

Copy this sheet and tick the products you are interested in or you want to order. Fax or mail it to the sheet by entering your address details: +49(0)209 779979-85

to prevent the gremlins- The order shall not be deemed legally valid if they have received an order confirmation from us and confirm this.

The sheet can also be found on our website at www.twinsaw.de/products

Equipment/ Set the saw to		Please tick the item numbers before what type they want. Should be more marked, you are offered several sets. Please enter in the box to the right for a request for ordering B, as well as in the last number!								
In each set / equipment is always the basic set included with saw and basic supplies										
Set	Additional Accessories	CRE 2326 Electric saw	CRF 3226 Fuel saw	CRF 3428 Fuel saw	CRF 4030 Fuel saw	A/B	Anz			
Basic set	1 Pair Saw -blades	<input type="radio"/> 1 2326 260	<input type="radio"/> 1 3226 260	<input type="radio"/> 1 3428 260	<input type="radio"/> 1 4130 260					
Fire department	2 P. SB	<input type="radio"/> 1 2326 520	<input type="radio"/> 1 3226 520	<input type="radio"/> 1 3428 520	<input type="radio"/> 1 4130 520					
Allround	2 P. SB; Betonkit; Alubox	<input type="radio"/> 1 2326 900	<input type="radio"/> 1 3226 900	<input type="radio"/> 1 3428 900	<input type="radio"/> 1 4130 900					
Bitumen	2 P. SB; Water Cover	<input type="radio"/> 1 2326 525	<input type="radio"/> 1 3226 525	<input type="radio"/> 1 3428 525	<input type="radio"/> 1 4130 525					
Bus rescue	2 + 1 P. SB; Cover 235	<input type="radio"/> 1 2326 730	<input type="radio"/> 1 3226 730	<input type="radio"/> 1 3428 730	<input type="radio"/> 1 4130 730					
Train rescue	4 + 1 P. SB; Alubox	<input type="radio"/> 1 2326 800	<input type="radio"/> 1 3226 800	<input type="radio"/> 1 3428 800	<input type="radio"/> 1 4130 800					
Saw Blades and Accessories		Please tick here, which SB-Type of which saw Only possible loop combinations displayed!							A= Inquiry B=Order	
Art.-Nr.	Description	Current Models				Predecessor			A / B	Anz
	SW= Schnellwechsel	CRE 2326	CRF 3226	CRF 3428	CRF 4030	Wim. 2747	CDC 2224	CDC 2530		
1 0210 100	CSM 210 54Z HM	<input type="radio"/>				<input type="radio"/>	<input type="radio"/>			
1 0235 100	CSM 236 60 Z HM					<input type="radio"/>	<input type="radio"/>			
1 1210 100	CMB 210 54 Z HM	<input type="radio"/>	<input type="radio"/>							
1 1235 100	CMB 235 60 Z HM	<input type="radio"/>	<input type="radio"/>	<input type="radio"/>				<input type="radio"/>		
1 1260 100	CMB 260 66 Z HM	<input type="radio"/>	<input type="radio"/>	<input type="radio"/>	<input type="radio"/>			<input type="radio"/>		
1 1280 100	CMB 280 72 Z HM			<input type="radio"/>	<input type="radio"/>			<input type="radio"/>		
1 1310 100	CMB 310 78 Z HM				<input type="radio"/>			<input type="radio"/>		
1 0235 400	CST 235 Training	<input type="radio"/>	<input type="radio"/>	<input type="radio"/>	<input type="radio"/>	<input type="radio"/>	<input type="radio"/>	<input type="radio"/>		
1 1300 021	TSB 300 Concrete EB	<input type="radio"/>	<input type="radio"/>	<input type="radio"/>	<input type="radio"/>					
1 1400 018	TSR 305 Rescue blade	<input type="radio"/>	<input type="radio"/>	<input type="radio"/>	<input type="radio"/>					
1 556	Aluminum case to the saw	<input type="radio"/>	<input type="radio"/>	<input type="radio"/>	<input type="radio"/>					
1 0310 450	Cover with water supply	<input type="radio"/>	<input type="radio"/>	<input type="radio"/>	<input type="radio"/>					
1 5110 600	1 Piece Tool Carry	<input type="radio"/>	<input type="radio"/>	<input type="radio"/>	<input type="radio"/>	<input type="radio"/>	<input type="radio"/>	<input type="radio"/>		
1 5110 100	Cool+ lubricant	<input type="radio"/>	<input type="radio"/>	<input type="radio"/>	<input type="radio"/>	<input type="radio"/>	<input type="radio"/>	<input type="radio"/>		
1 0113 105	6 pieces Ligatures	<input type="radio"/>	<input type="radio"/>	<input type="radio"/>	<input type="radio"/>	<input type="radio"/>	<input type="radio"/>	<input type="radio"/>		
1 0110 410	1 Piece hand pump	<input type="radio"/>	<input type="radio"/>	<input type="radio"/>	<input type="radio"/>	<input type="radio"/>	<input type="radio"/>	<input type="radio"/>		
1 0110 417	1 Stck. Pumpbalg	<input type="radio"/>	<input type="radio"/>	<input type="radio"/>	<input type="radio"/>	<input type="radio"/>	<input type="radio"/>	<input type="radio"/>		
1 0110 423	1m hose pump oil	<input type="radio"/>	<input type="radio"/>	<input type="radio"/>	<input type="radio"/>	<input type="radio"/>	<input type="radio"/>	<input type="radio"/>		
1 1000 500	Training-CD									
<input type="radio"/>	Exchange Offer New Saw - Old Saw	<input type="radio"/>	<input type="radio"/>	<input type="radio"/>	<input type="radio"/>	<input type="radio"/>	<input type="radio"/>	<input type="radio"/>		
<input type="radio"/>	We are interested in a training					~ Event Presentation month – weekday:		~ Number of participants: Time:		
<input type="radio"/>	We are interested in (groups of at least 5 bet) for a day of action									
<input type="radio"/>	We are interested in the special seminar									
<input type="radio"/>	I have not found the product					Name		First name:		
<input type="radio"/>	I ask for as quickly as possible and delivery confirmation									
<input type="radio"/>	I ask for an offer					Fon.:		Mail:		
<input type="radio"/>	please contact me at the address on the right side									
<input type="radio"/>	We are distributors					Company/Unit				
<input type="radio"/>	We are <input type="radio"/> Firefighter <input type="radio"/> THW <input type="radio"/> Smth.else									
Road		Zip Code - Place				Country				
Date		Place				Signature				

