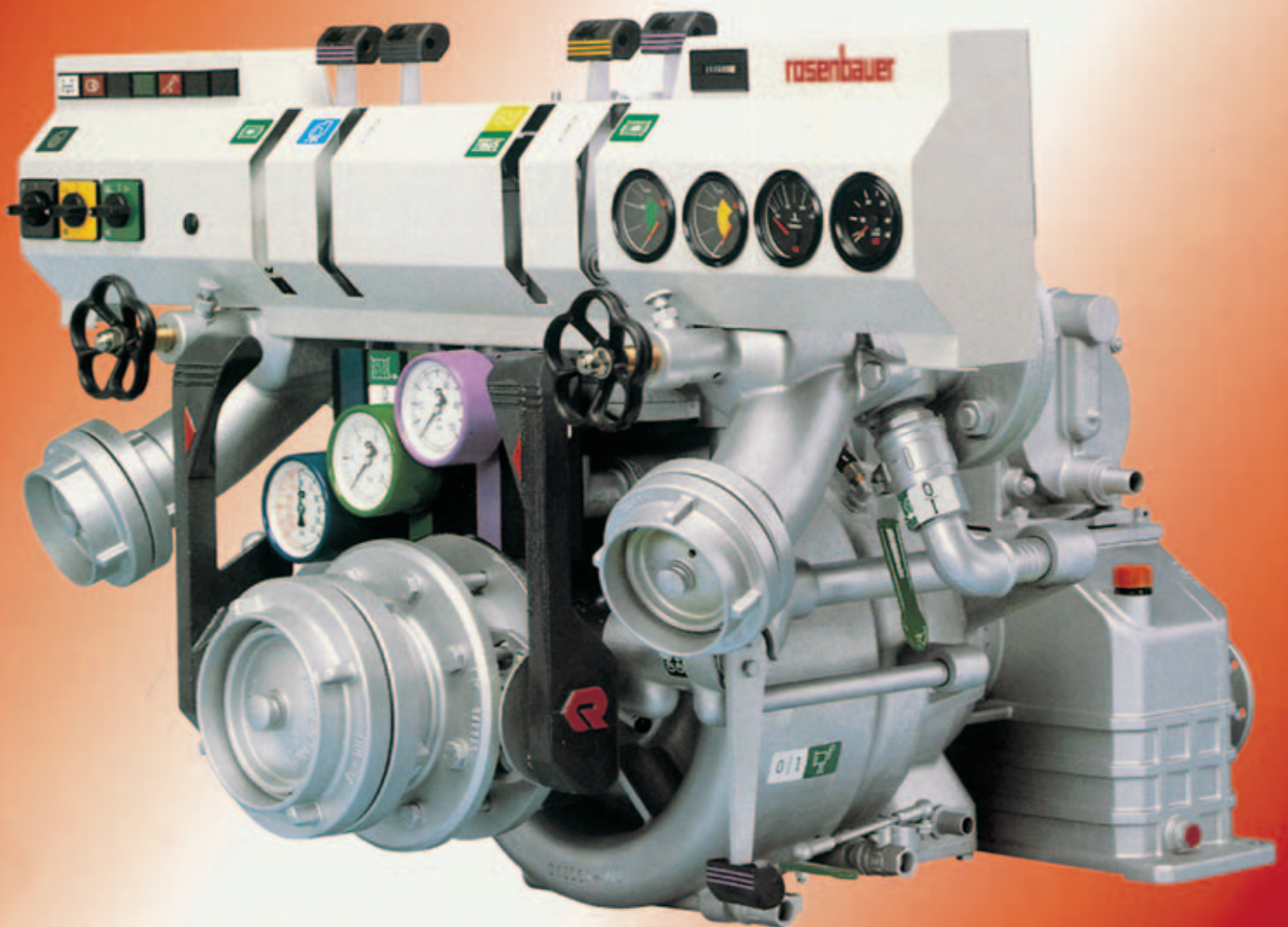


Combined normal-  
pressure/high-pressure  
pump **NH20**

 **rosenbauer**



# NP/HP fire pump

## Model: NH 20

### Design:

combined centrifugal pump consisting of:

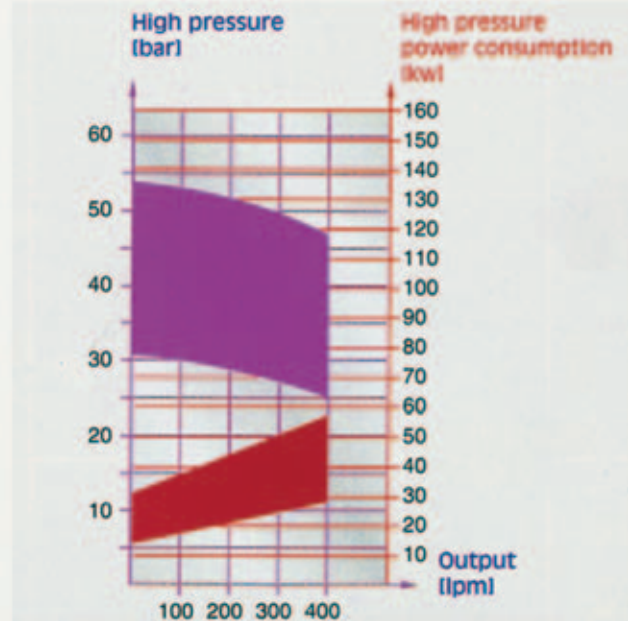
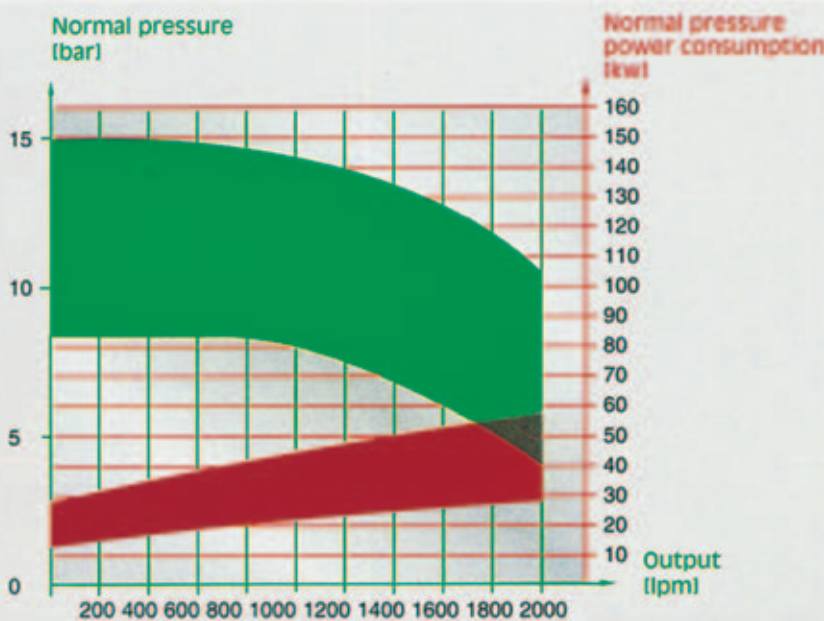
- NP (normal pressure) centrifugal pump
- HP (high pressure) centrifugal pump
- pump gearbox
- double-piston priming pump

### Technical data:

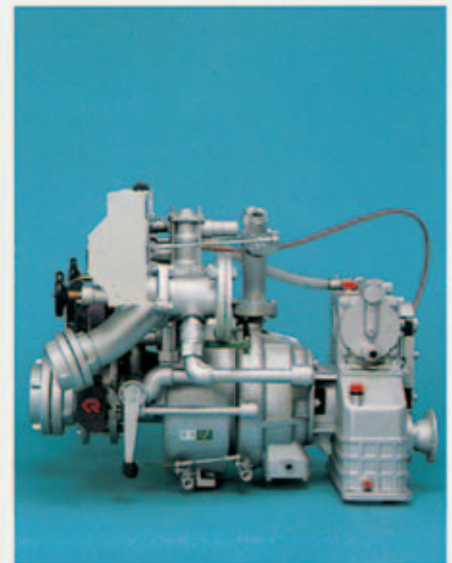
- Suction lift:  
3 m in 5 secs. (suction hose: diam. = 110 mm, l = 4,8 m)
- NP output max.: 2000 l/min at 10 bar
- HP output max.: 400 l/min at 40 bar
- PTO revolutions: Starting from 1650 min<sup>-1</sup>, as a variety of pump gear ratios are available
- Rotational direction of drive: clockwise or anticlockwise
- Materials:  
The housing and the impellers are made of corrosion-resistant anodized light alloy; the shaft is made of stainless steel.

### Optional features:

- Various gear ratios
- Different types of suction inlet and pressure outlet connections
- Pump made of gun metal
- Automatic priming
- Pump heating/motor cooling systems
- Tank suction connection, outlet for monitor, connections for tank-filling and for HP and NP reels
- "FIX-MIX" NP proportioner (for 1, 2 or 3 proportioning rates)
- Automatic HP overheating control system
- "FIX-MIX" HP proportioner
- "DRE" NP pressure regulator unit
- Instrumentation



- bar  $\Delta$  overall pump head
- Factors influencing the measurements are: suction lift, type, length and diameter of suction hose, number and type of the suction couplings, atmospheric pressure, altitude above sea level, temperature of water/air, etc.



Rosenbauer  
International  
Aktiengesellschaft  
Fire Fighting Technology

A-4060 Leonding, Paschinger Strasse 90  
Austria  
Tel.: +43 (0)732 6794 0  
Fax: +43 (0)732 6794 83  
E-Mail: rbi@rosenbauer.com  
www.rosenbauer.com

Text and illustrations are not binding.  
The illustrations may show optional  
extras only available at extra charge.  
Rosenbauer retains the right to alter  
specifications and dimensions  
given herein without prior notice.