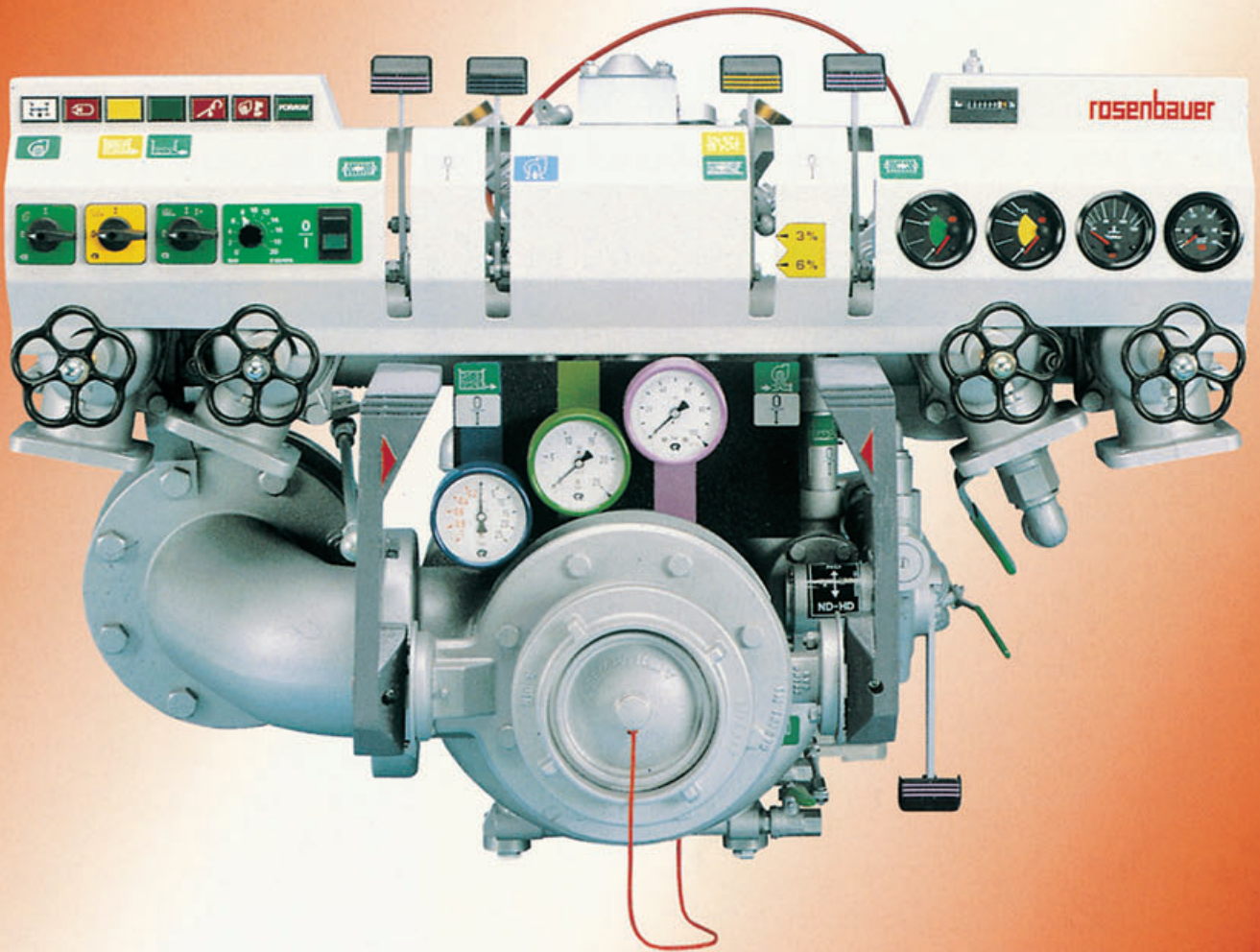




Combined normal- pressure/high-pressure pump **NH30**



NP/HP fire pump

Model: NH 30

Design:

combined centrifugal pump consisting of:

- NP (normal pressure) centrifugal pump
- HP (high pressure) centrifugal pump
- pump gearbox
- double-piston priming box

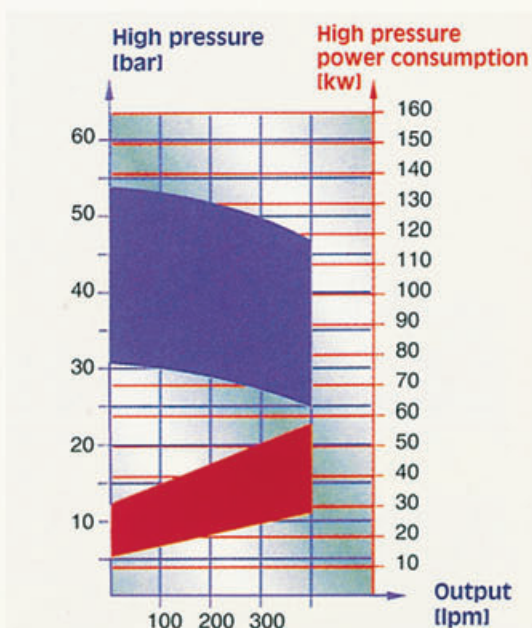
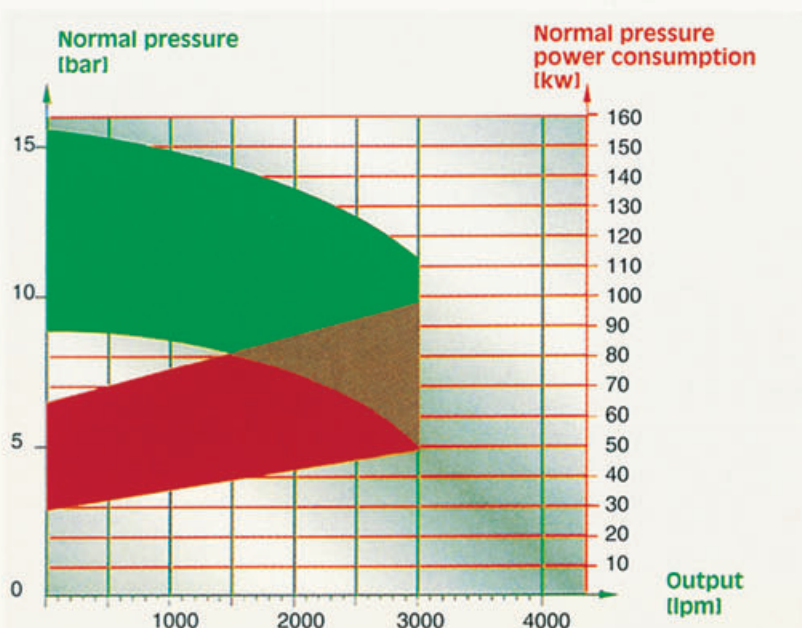
Technical data:

- Suction lift: 3 m in 7 secs. (suction hose: diam. = 125 mm, l = 4.8 m)

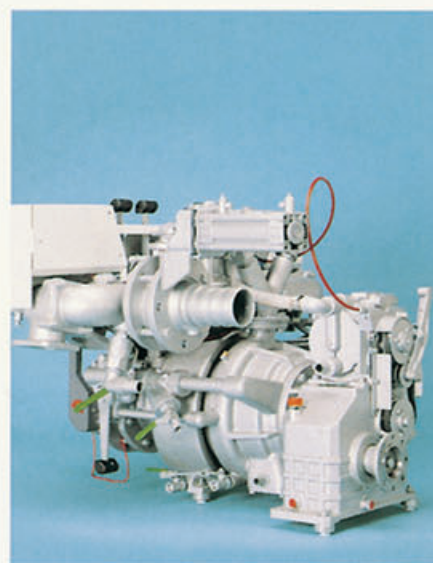
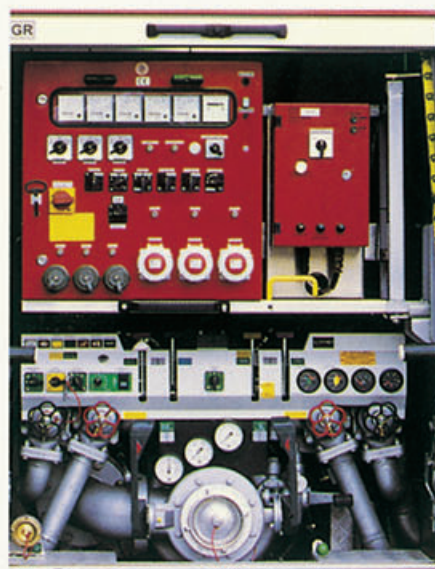
- NP output max: 3000 l/min at 10 bar
- HP output max: 400 l/min at 40 bar
- PTO revolutions: Starting from 1650 min⁻¹ as a variety of pump gear ratios are available:
- Rotational direction of drive: clockwise or anticlockwise
- Materials: The housing and the impellers are made of corrosion-resistant anodized light alloy; the shaft is made of stainless steel.
- Pump shaft sealing with rotating mechanical sealing maintenancefree.

Optional features:

- Various gear ratios
- Different types of suction inlet and pressure outlet connections
- Pump made of gun metal
- Automatic priming
- Pump heating/motor cooling systems
- Tank suction connection, outlet for monitor, connections for tank-filling and for HP and NP reels
- "FIX MIX" NP proportioner (for 1 or 2 proportioning rates)
- Automatic HP overheating control system
- "FIX MIX" NP proportioner
- "DRE" NP pressure regulator unit
- Instrumentation



- bar Δ overall pump head
- Factors influencing the measurements are: suction lift, type, length and diameter of suction hose, number and type of the suction couplings, atmospheric pressure, altitude above sea level, temperature of water/air, etc.



Rosenbauer
International
Aktiengesellschaft
Fire Fighting Technology

A-4060 Leonding, Paschinger Straße 90
Austria
Tel.: +43/(0)732-6794-0
Fax: +43/(0)732-6794-88
E-Mail: rbi@rosenbauer.co.at
www.rosenbauer.co.at

Text and illustrations are not binding. The illustrations may show optional extras only available at extra charge. Rosenbauer retains the right to alter specifications and dimensions given herein without prior notice.