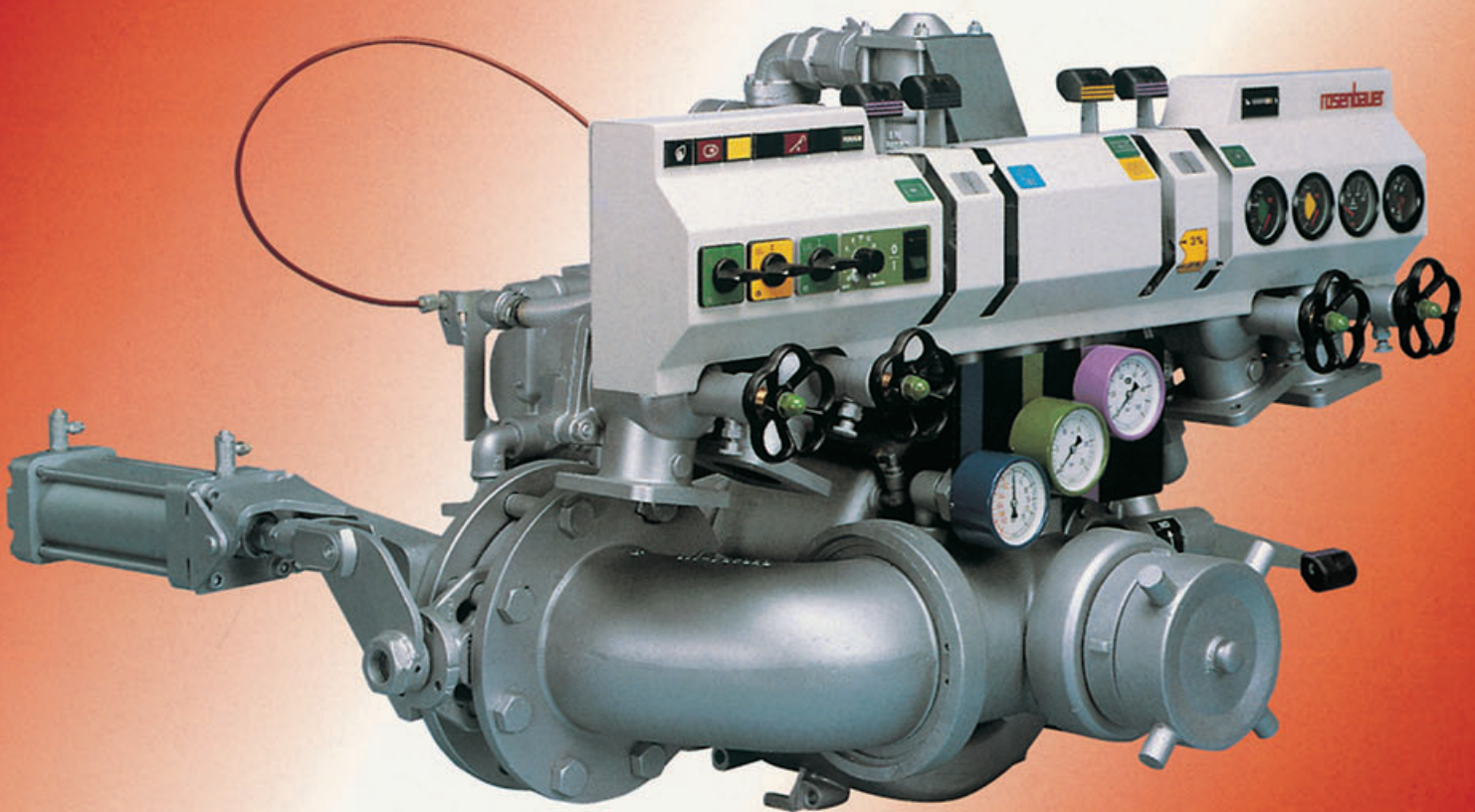




# Combined normal-pressure/ high-pressure pump NH 40





# NP/HP fire pump

## Model: NH 40

### Design:

combined centrifugal pump consisting of:

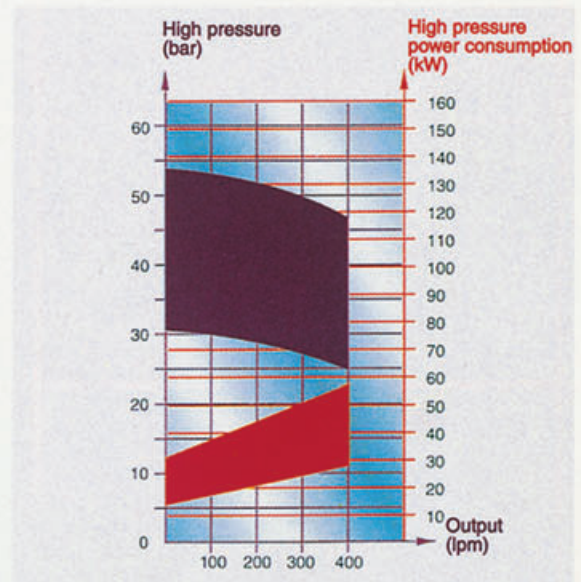
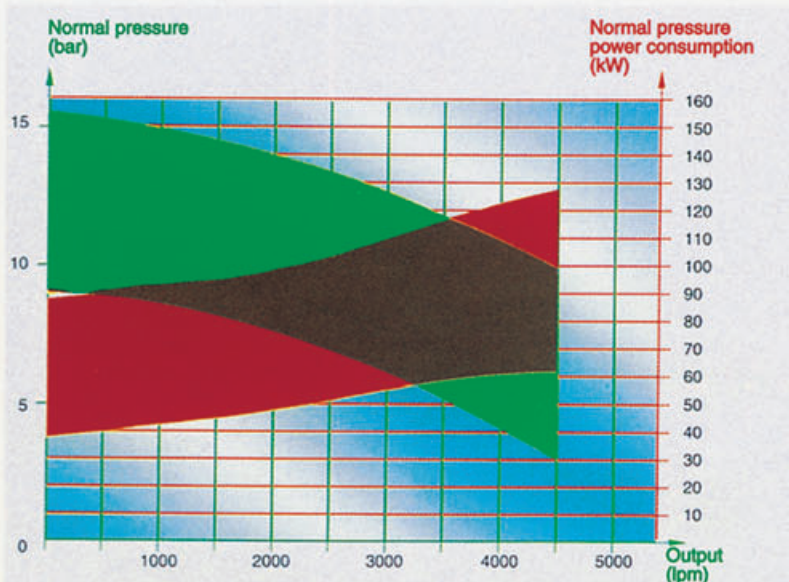
- NP (normal pressure) centrifugal pump
- HP (high pressure) centrifugal pump
- pump gearbox
- double-piston priming pump

### Technical data:

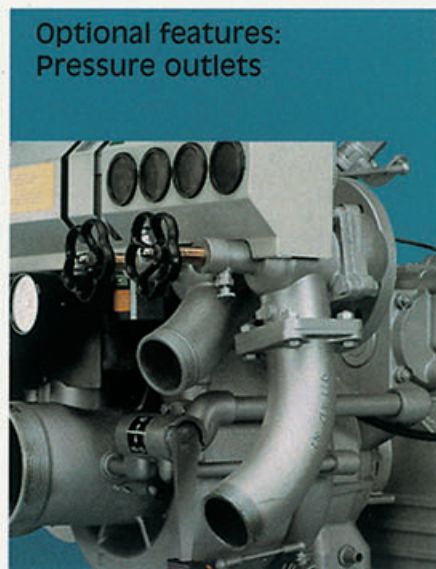
- Suction lift: 3 m in 11 secs. (suction hose: diam. = 150 mm, L = 4,8 m)
- NP output max: 4000 l/min at 10 bar
- HP output max: 400 l/min at 40 bar
- PTO revolutions: Starting from 1650 min<sup>-1</sup>, as a variety of pump gear ratios are available.
- Rotational direction of drive: clockwise or anticlockwise
- Materials: The housing and the impellers are made of corrosion-resistant anodized light alloy; the shaft is made stainless steel.

### Optional features:

- Various gear ratios
- Split-shaft gearbox
- Different types of suction inlet and pressure outlet connections
- Pump made of gun metal
- Automatic priming
- Pump heating/motor cooling systems
- Tank suction connection, outlet for monitor, connections for tank-filling and for HP and NP reels
- "FIX-MIX" NP proportioner (for 1 or 2 proportioning rates)
- Automatic HP overheating control system
- "FIX MIX" HP porportioner
- "DRE" NP pressure regulator unit
- Instrumentation



- bar  $\triangleq$  overall pump head
- Factors influencing the measurements are: suction lift, type, length and diameter of suction hose, number and type of the suction couplings, atmospheric pressure, altitude above sea level, temperature of water/air, etc.



Optional features:  
Pressure outlets



Optional features:  
Split-shaft gearbox