

Wireless Remote Control Monitor



Protek's Wireless Remote Control Monitors are technologically advanced, electrically controlled deck monitors. Wireless remote control facilitates effective use of personnel and lowers the potential risk of injury from manual operations.

Style 933

- Allows operator to control the stream from as far as 200 meters away from the monitor for safety and efficiency
- 2-1/2" waterway for flow rate of up to 750 GPM
- Cast-in turning vanes for efficient flow and minimal friction loss
- Optional 180° or 300° horizontal rotation
- Vertical travel 90° above 45° below horizontal
- Electric nozzle with an adjustable flow baffle
- Comes with Protek's electric monitor nozzle Style 817E
- Electronic controls with manual override
- Brushless electric motor designed to eliminate sparks and reduce risk of ignition
- Automatic power off function during inactivity for enhanced performance and safety
- Programmable automatic oscillation and stow position
- Standard 24V with optional integrated AC-110V or AC-220V
- Optional 12V or with DC power supply

		Style 933		
Max. GPM (LPM)		750 (2900)		
Inlet	Size	3"	3"	4"
	Type	Thread	Flange	
Outlet		2-1/2" (65mm)		
Control		Electric		
Material		Alloy		
Finish		Red Powder Coating		
Friction Loss		15 psi at 75 GPM		
		12 psi at 500 GPM		
Travel		135° Vertical		
		180° or 300° Rotation		
Weight		26 Lbs. (12 kg)		



Style 933 monitor shown with standard accessories: Style 817E nozzle, control monitor, connection cables, primary transmitter and wireless transmitter

Wireless Remote Control Monitor



sales @protekfire.com.tw
www.protekfire.com.tw

Wire or Wireless Joystick Control

2-1/2" or 3" Electric Valve



Touch Screen Control Panel (Also Monitor Position Display)

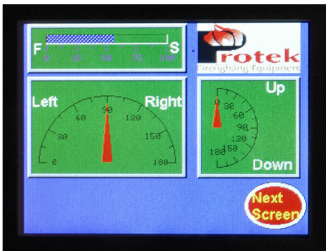
Designed to be mounted to the apparatus and be in ultimate control of the fire stream. Fully customizable display screens make total control simple and user-friendly. Controlling up/down, left/right, flow pattern, opening the valve, oscillating and displaying the position cannot be easier.



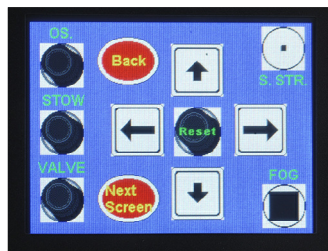
817E Electric Nozzle



Monitor Position Display



Functional Pad Display



Optional Accessories:

- 2.5" or 3" Electric Valve
- Wire or Wireless Joystick Control
- Touch Screen Control Panel
- Integrated AC-110V or AC-220V
- DC Power Supply
- Terminal Board

Specification

Style	Material	Pattern Control	Flow @ 100 psi (7 BAR)		Teeth	Inlet	Weight Lbs (kg)
			GPM	LPM			
817E	Alloy	Electric	250,400,	950,1525,	Fixed	2-1/2" (65 mm)	8.5 (3.8 kg)
			550,750	2100,2900			