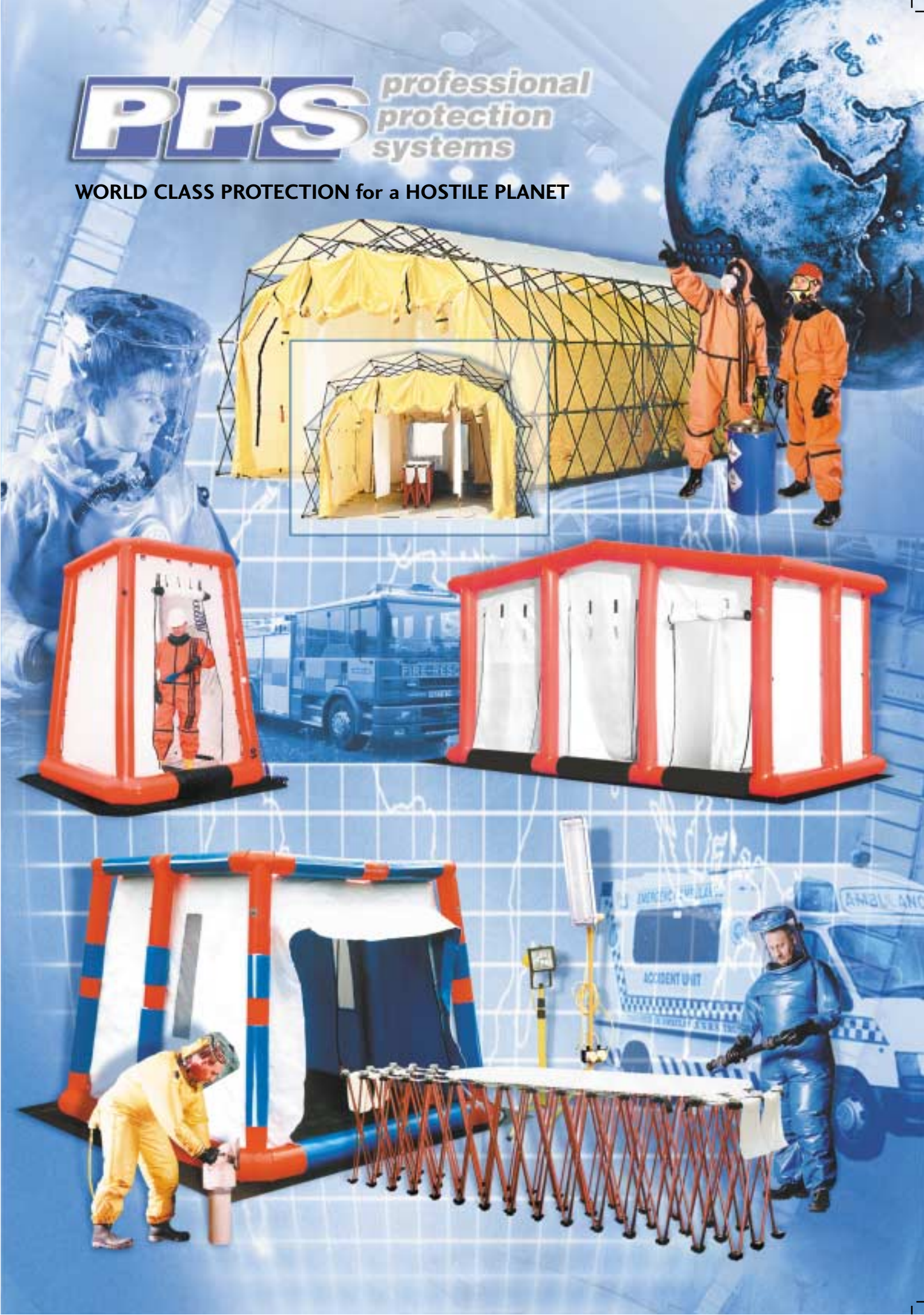


# PPS professional protection systems

WORLD CLASS PROTECTION for a HOSTILE PLANET



# WORLD CLASS PROTECTION for a HOSTILE PLANET

• Personal Protection Suits • Decontamination Showers • Shelters

Since the introduction of our ground-breaking inflatable decontamination shower units in 1996 PPS has become recognised by emergency services internationally as a world leader in the manufacture of decontamination equipment, notable for its ease of transport and swift deployment, in the wake of hazmat and terrorist incidents.

In addition PPS is one of the world's leading designers and manufacturers of protective clothing, for use in every kind of hazardous environment, and a market leader in the design and manufacture of air fed suits.

PPS is an ISO 9001 accredited company and implements manufacturing and general business systems that are firmly rooted in a responsible awareness to provide the safest and the best possible solutions for our customers.

Strategic alliances made with the best international material suppliers and designers, a world-wide network of distributors, a skilled and dedicated workforce using the most advanced computer aided design and manufacturing technology, has all combined to place PPS at the top of a demanding and knowledgeable market.

BIG on INNOVATION  
BETTER on COMMITMENT  
BEST on QUALITY



A stable company with a solid history

Cert. No.FM 30783

Founded in 1945, originally as Plysu Protection Systems, and utilising specially developed and unique welding technology, PPS started manufacturing early light weight protective garments, such as PVC rainwear and cycling capes, and has played an important roll in the history of plastics.

By the late fifties the new nuclear power industry had created the need for Personal Protective Equipment of an unprecedented standard. New materials, combined with our special welding technology, rapidly made the company UK leader in air fed nuclear suit production, bringing in its wake orders for suits for use in a variety of other hazardous environments. The company also acquired some "extra terrestrial" business a few years later; making the Ice Warriors' suits for Dr.Who, the longest running Sci-Fi TV series on record.

Today PPS is still at the forefront of events. Our inflatable decontamination technology is to be found all around the world. In Germany it is standard equipment with many of the fire and rescue services, and, in the wake of the Sarin incident in Tokyo a few years ago, Japan's emergency services have equipped themselves with PPS decontamination technology. Daily, this equipment, along with PPS protective clothing, can be found in use as far apart as Paris, Hong Kong, Tokyo, New York and the Middle East. It all comes with a high quality customer service and maintenance package. Products are available bespoke, or off the shelf, and the range of optional accessories is one of the largest available anywhere.



Protection House, Sherbourne Drive, Tilbrook,  
MILTON KEYNES, Bucks, ENGLAND. MK7 8AP

Tel : +44 (0) 1908 272240

Fax : +44 (0) 1908 371605

Email: sales@ppsgb.com

Website: www.ppsgb.com

## JOIN OUR GROWING LIST OF SATISFIED CLIENTS

Department of Health  
National Health Service  
HM Fire Service Inspectorate  
Glaxo Smithkline  
Astra Zeneca  
Magnox Electric  
BASF  
Japanese Defence Agency  
British Nuclear Fuels (BNFL)  
3M  
Pfizer Limited  
Roche Products  
Rhodia Chirex  
UKAEA  
Greenham Trading  
Rolls Royce  
ARCO  
Aventis  
Proctor & Gamble  
Japanese Fire Dept  
French Government  
Italian Fire Service  
Hong Kong Fire Service  
German Fire Service  
US Air Force Fort Bragg  
Pittsburgh Children's Hospital  
Nuclear Electric  
Eli Lilly  
MSD (Merck, Sharp and Dohme)  
AWE (Aldermarston)  
Fine Organics  
Macfarlan Smith  
Novartis  
Sigma Aldrich Chemicals

## MISSION STATEMENT

PPS are committed to best practice in the design, production and operation of protective clothing for every type of hazardous environment, striving continually to enhance safety and comfort factors as well as raising the operational efficiencies of its products. Similarly PPS intend to remain world class innovators in the field of decontamination technology, producing products that deliver faster and more efficient solutions than the rest. This is all part of the company's total commitment to its customers and their needs.



6-7



8-9

**PAGE CONTENT**

2 Introduction and Company Profile  
 3 Client List and Mission Statement  
 5 Introduction to: Protective Suits and Hoods  
 Includes Suitability Key



10-11



12-13

6-7 Protective Suits Full Suits  
 8-9 Protective Suits Full Suits Half Suits Hoods Trousers  
 10-11 Suit Accessories  
 12-15 Shower Systems  
 16-17 Shower Accessories Includes Shower Decontamination Diagram  
 18-19 Mass Decontamination Systems Includes Procedures Diagram  
 20 Shelter Accessories  
 21 Special Products  
 22-23 Distribution Network  
 24 Support Services and Suit Size Chart



16-17



18-19



Protection House, Sherbourne Drive, Tilbrook, MILTON KEYNES, Bucks, ENGLAND. MK7 8AP  
 Tel : +44 (0) 1908 272240 - Fax : +44 (0) 1908 371605  
 Email: sales@ppsgb.com Website: www.ppsgb.com

# PERSONAL PROTECTION SUITS and HOODS

## FIRST LINE DEFENCE in a HAZARDOUS ENVIRONMENT

PPS offer a versatile and multifunctional range of full and half suits and hoods to answer the needs of any industry, emergency service or military force. Requiring only minimal maintenance, all are manufactured to rigorously high international standards, all utilise the most appropriate materials available and all of them enable YOU to have the confidence that you are using the very best and safest designs around. A complete range of sizes make them easy to don and comfortable to wear. A comprehensive range of accessories is available to extend functionality.

### TYPICAL USERS

Nuclear / Chemical / Pharmaceutical / Biohazard / HazMat / Emergency Services / Military / Food Processing / Clean Room Working / Paint Spraying / Shot or Slurry Blasting / Waste Disposal and Recycling / Petro-Chemical / Agro-Chemical / Water Services / Paper Mills

### CHEMICAL SPLASH SUITS (CS)

The Plychem CS range of reusable chemical splash suits offer a high degree of protection against a wide range of chemical contaminants. Suitable for routine chemical handling or Hazmat chemical spillage.

### NUCLEAR SUITS

For many years PPS has been well established as a prominent supplier of special suits to the nuclear industry. We produce a fully approved nuclear full suit conforming to EN1073-1: 1996 specifically for use in hazardous environments. We also produce standard half suits and hoods for less demanding applications.

### RESPIRATORY SUITS and HOODS

These "positive pressure / constant flow" suits enable operators to work safely and comfortably in the most hazardous environments.

#### Breathing Apparatus (BA) Suits

The Plychem BA is a range of reusable gas tight fully encapsulating chemical resistant suits offering a high degree of protection against a wide range of contaminants.

#### External BA Chemical Splash (EBACS) Suits

The Plychem EBACS is a range of reusable gas tight suits designed for use with BA sets worn outside of the suit, and offering a high degree of protection against a considerable range of chemical contaminants.

#### Air Fed (AF) Suits

The Plychem AF is a range of reusable air fed suits offering a high degree of protection against a wide range of chemical contaminants.

#### Air-Line Fed Full and Half Suits

Plychem air-line fed full suits offer whole body protection at a cost effective price. The suits are seam welded for strength and chemical resistance and incorporate a unique rigid cuff and glove change system. The anti-mist hood is designed to maintain full field of vision for maximum safety, and because it does not touch the operator's face, is extremely comfortable to wear. An air distribution system provides cool air to the body, allowing suits to be worn comfortably for extended periods. Reusable or Disposable Versions are available.

### SUITABILITY KEY

To select your required suits by industry / hazard please refer to symbols above each description.



Biological



Chemical



Multi-Use



Nuclear



Pharmaceutical



# PROTECTIVE SUITS



**Plychem CS**



### **Plychem CS**

Chemical Splash Suits  
For use in Hazmat Operations,  
Chemical Spillage Incidents,  
or routine work with chemicals  
Available in different styles  
Use with appropriate respiratory device  
Replaceable Glove System  
Gas tight face or neck seals  
Triple sealed zip  
Material: Hypalon / Neoprene  
Butyl / Viton  
Sizes: Small – XX Large  
Product Range Codes: TH



**Plychem CS**



**Plychem Chemical Coverall**



### **Plychem Chemical Coverall**

Zip front  
Elasticated hood and wrists  
Attached sock boots and boot flaps  
Taped seams  
Double zip flap with Velcro closure  
Material: Responder / CPF3



**Plychem Chemical Coverall**



### **Plyflair Multi-Use**

Air Line Fed Respiratory Full Suits  
For use in a wide range of applications  
Extensively used in the Pharmaceutical and  
Chemical Industries  
Selection of materials to meet the application  
Choice of Visors  
Choice of Leg Terminations  
Wide range of Accessories including Intercom and  
Emergency Breathers  
Material: PVC / Polyurethane  
Neoprene / Butyl / Viton  
Sizes: Small – XX Large  
Product Range Codes: AA and TG

**PPS**  
professional  
protection  
systems



**Plyflair Multi-Use**



**Plyflair Pro-Plus**



**Plyflair Pro-Plus**

Limited Life or Disposable  
Air Fed Full Suit  
Improved Chemical Protection  
Light weight and comfortable  
Low cost  
Reusable air system  
With elasticated legs or socks  
PVC visor with Teflon Overlay  
Material: CPF3  
Sizes: Small – XX Large  
Product Range Code: TG



**Limited Life Air Fed Full Suit**



**Limited Life Air Fed Full Suit**

Low Cost  
One Piece Suit  
Disposable or Re-useable  
Fully encapsulating  
Fixed PVC Gloves  
Integral Socks  
Use with Spider Air System (see pg 10)  
Material: Natural PVC  
Sizes: Small – XX Large  
Product Range Code: AF



**Plyflair One-Go**

Disposable Air Fed Full Suit  
Low Cost  
Reusable Air System or use with  
Spider Air System (See pg 10)  
Light weight and comfortable  
Available with elasticated legs or socks  
PVC visor  
Material: CPF1  
Sizes: Small – XX Large  
Product Range Code: TG



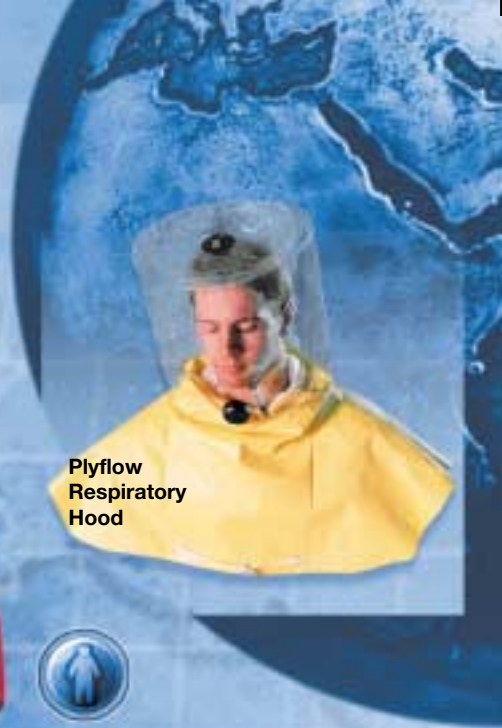
**Plyflair One-Go**



**Plyflair Multi-Use**



# PROTECTIVE SUITS



**Plyflow Respiratory Hood**



**Plyflow Respiratory Hood**

Use with Blower Motor  
For use in a variety of industries  
Versatile, light weight, comfortable  
All round vision  
Blower unit / accessories including  
intrinsically safe battery (IS)  
Material: Yellow Wavelock PVC  
Product Code: 8000702387



**Plychem EBACS**

**Plychem BA**



**Plychem EBACS**

Heavy Duty Chemical Suit  
For High Risk Environments  
Rapid external BA Cylinder Change  
Permanently bonded mask available  
(depends on make of BA)  
Gas Tight  
Fitted with Exhalation Valves  
Replaceable Glove System  
Safety Boots in a range of sizes  
Material: Hypalon / Neoprene  
Butyl / Viton  
Sizes: Small – XX Large  
Product Range Code: TE

**Plychem BA**

Heavy Duty all Encapsulating Chemical Suit  
For High Risk Environments  
Protection for wearer and breathing apparatus  
Use with any make of breathing apparatus  
Gas Tight  
Optional Pass through feature for connecting to  
Air Line  
Replaceable Glove System  
Material: Hypalon / Neoprene / Butyl  
Viton / Durachem / Responder  
Sizes: Small – XX Large  
Product Range Code: TL



**Limited Life Trousers**

Disposable, with integral boots (Socks)  
Use with limited life half suits  
Material:  
Natural PVC (Range Code: EB)  
also available:  
Multi Use Trousers in Yellow Wavelock  
or Duraskin (Range Code: PC)



**Limited Life Trousers**



**Plychem Pro-Plus BA**

See Suit Sizing Details  
on back cover.





**Disposable Air Fed Half Suit**



**PPS Half Suit**



**Hood**  
 Full respiratory protection, in 2 sizes  
 Maximum comfort in exposed areas  
 Choice of colours, and visor options  
 Material: PVC / PU / Hypalon / Neoprene  
 Product Range Code: FA / FB or TK



**Disposable Air Fed Half Suit**  
 Lightweight  
 Elasticated sleeves and waist for comfort  
 Disposable or limited life  
 Reusable Airbelt to save on costs  
 Material: PVC  
 Product Range Code: EA



**PPS Half Suit**  
 For upper body protection  
 Range of sizes and materials  
 Optional trousers available (see left pg bottom)  
 Choice of visors  
 Low Maintenance  
 Materials: PVC / Polyurethane  
 Neoprene / Hypalon  
 Product Range Code: DA and TJ



**Nuclear 2 Piece Suit**  
 Emergency breather system  
 Removable air distribution system  
 Reusable belt and couplings  
 Button and elasticated waist  
 Available with lifting point on back  
 Product Range Codes:  
 Top-DG Trousers-PC



**Nuclear One Piece Air Fed Full Suit**  
 For use in Nuclear, Nuclear Power  
 and related industries  
 Rear entry via Gas Tight Zip  
 Fully ventilated  
 Strong, flexible and impermeable material  
 Excellent all round Visor  
 Emergency Breather System  
 Available in a number of styles  
 Material: Polyurethane  
 Sizes: Small - XX Large  
 Product Range Code: BE



**Nuclear 2 Piece Suit**

**Nuclear One Piece Air Fed Full Suit**



# PROTECTIVE SUIT ACCESSORIES

## Plyflair Spider System

Reusable Air System, most cost effective when used with One-Go and Plus and other Limited Life Suits  
For use with Suit Shell  
Supplied in all materials  
One size fits all  
Product Code: 8000497731



**Plyflair Spider System**

## Air Line Belt

For use with all Air Line Fed Products  
Low Flow Warning Device  
Diaphragm Operated – Sealed for Life  
Totally maintenance free  
Removable and reusable - one off purchase  
Worn internally on Full Suits  
Worn externally on other products  
Approved Couplings can be Supplied  
Product Range Code: GA

**Air Line Belt**

## Inline Filter

Used where there is a risk of breaching the air line's integrity at Hose / Air Belt junction, thereby eliminating possible contamination.  
Supplied in Lightweight Aluminium or acetal Canister  
Replaceable Cartridges available at Sub Micron Levels (93%@0.1 µm or 99.99%@0.1 µm)  
Product Range Code: GA



**Inline Filter**



## Range of Air Couplings

Large choice of Approved Couplings (self-sealing options)  
Materials: brass, stainless steel, mild steel (BSP threads)

In addition to the items shown here, air control & filtration panels, vortex tubes, air hoses, pressure regulators, gauges and in-line flow monitoring / alarm units are also available.



**Kemira Pro Mask**

Product Codes determined by Canister Versions:  
ProMask PS503736  
Multi Use PS503737  
PS Canister PS503738



**Kemira Pro Mask**



**Plyflow Blower System**

**Plyflow Blower System**

Used only with the Plyflow Hood (see pg 9)  
For use in a variety of Industries  
Simple, versatile and lightweight  
Comfortable to wear  
Range of Battery sizes available  
Can be fitted with 1, 2 or 3 filters (with the aid of Adaptors)  
Wide range of Filters available  
Visual and Audible Indicator

**Kit Bag**

For convenient storage and transport  
Use with BA suit or Chemical Suit  
PPE complete kit bag  
Product Code: PS503740

**Kit Bag**



**3/8" Bore PVC Hose**

EN270 Approved  
Low Cost  
Very flexible and lightweight  
Available with BSP Male Threads or specified coupling fitted  
Lengths: 10, 15 or 20 metres  
Material: Blue PVC  
Product Range Code: JL

**3/8" Bore PVC Hose**



**Glove Box / Isolator sleeves**

**Glove Box / Isolator Sleeves**

Double skin  
Various sizes  
Available to fit glovebox and isolator ports  
Material: PVC  
Product Range Code: RB



**Protective Oversleeve**

**Protective Oversleeve**

Various sizes  
Material: PVC  
Product Range Code: NA

**Niltox Breathing Air Purifier**

**Niltox Breathing Air Purifier**

Complies with current Safety Standards BS4275  
Output regulating for flow adjustment  
Self monitoring  
Approx. 1000 Hrs run time  
Visual Indicator of units performance  
Pneumatic or electronic options





# DECONTAMINATION SHOWER SYSTEMS

## DECONTAMINATION SHOWER SYSTEMS

Since the introduction of our innovative inflatable decontamination shower units in 1996, we have developed an extensive range of associated products based on the concepts of portability and versatility. Motivation for our designs have, up until recently, come from the need to treat personnel working in or being exposed by accident to hazardous substances, be they chemical or bio-chemical hazards. Tragic events related to terrorist attacks have led to the world having to take steps to prepare for mass or group decontamination.

This new uncertainty means that emergency planning procedures have been reviewed and updated considerably, to a point where it is compulsory for public bodies to have contingency plans for all perceived eventualities. Military and Civilian emergency response teams therefore have a wide range of differing requirements, but all needing the confidence of knowing an effective decontamination system is being utilised.

PPS have invested time and resources into developing two fundamentally different ranges for each of those requirements. The following pages detail the different products that can be used for individual or mass decontamination, and the various accessories needed to build a fully operational system. We have a number of Decontamination Showers and Shelters that can work in combination, through a modular approach, to cope with any situation from an individual requiring immediate attention to a large group of people requiring continuous processing.

### Decontamination, Portable and Inflatable System - DPI

The Plychem DPI shower system is a highly effective, attractively priced decontamination shower system that can be easily transported and rapidly deployed to cope with decontamination of personnel wherever it is required.

The DPI is in line with current thinking in employing low flow high-pressure jets to create a water 'mist' that achieves effective decontamination with the minimum of water usage. This is also environmentally sound in producing only a small amount of potentially contaminated water requiring disposal.

Weighing only 30Kg and supplied in a canvas bag, DPI can be deployed within 2 minutes to create a full size, stable 1.9M square x 2.2M high shower cubicle. Low flow (40 Lt / min) high-pressure water jets combined with hand held brush achieves rapid and thorough decontamination.

Integral containment system retains waste water for safe disposal, whilst optional disposable inner liner reduces need to decontaminate shower cubicle after use. Optional detergent injection system assists with decontamination procedure.



### The Integral PPS Decontamination Shower Assistance Station

This innovative, and extremely efficient, implementation of practical design is supplied as standard with the DPI and DPI X2 Shower System Units.

Allowing personnel outside the shower to assist with the decontamination process inside without having to wear Protective Clothing, the Assistance Station features a large and clear transparent screen, giving operators an unrestricted view of the occupant.

Coping easily with variation in operator height, the station also features robust, safe and flexible, long reach sleeves with changeable gloves.

A variety of decontamination tools, such as the water-fed scrubbing brush shown here, are easily manipulated by the operator.

### Decon Assist Station (see above right)

Supplied as standard with DPI and DPI X2 Showers  
Supplied in 0.25 m3 Canvas Bag  
Weight Approx 35 kg  
Dimensions: L 1900 mm - W 1900 mm - H 2300 mm  
Product Code: 8000502666

### DPI (Decontamination Portable Inflatable)

Rapid decontamination (including emergency services)  
6 fixed water jets (supplies 30 litres per minute)  
Water fed hand held Brush (supplies 10 litres a minute)

All Showers on pages 13,14 and 15 supplied with Inflation Adaptor and Repair Kit  
Accessories available: Detergent Injection System, Waste Water Pump, Ropes and Pegs, Heating System etc. (See Shower System Accessories, pgs 16 and 17)



DPI



**DPI X2**

**DPI X2**  
12 fixed water Jets (supplying 60 litres a minute)  
2 water fed hand held Brushes (supplying 20 litres a minute)  
2x Decon Assist Stations (see left)  
Supplied in 0.50 m3 Canvas Bag  
Weight Approx 42 kg  
Dimensions: L 2900 mm - W 1900 mm - H 2300 mm  
Product Code: 8000502662



**Custom DECAS V2**



**Custom DECAS**  
Undressing and shower areas

**Deflation Cap**



**Over pressure Valve**

Product Codes  
PS32950 – 1.30 PSI  
PS501284 – 1.75 PSI  
PS501294 – 2.50 PSI



**Inflation Valve**



**Custom DECAS V2**

Designed for Civilian Decontamination  
Separate undressing and shower areas (see left below)  
2 water fed hand held Shower Sprays (supplying 2 to 12 litres per minute per Spray)  
Supplied in 0.50 m3 Canvas Bag  
Weight Approx 40 kg  
Dimensions: L 2900 mm - W 1900 mm - H 2300 mm  
Product Code: 8000499588  
Pre and Post Decon Packs Available  
Price on application.

**Pre and Post Decon Packs Available  
Price on application.**

**DECAS W**

**DECAS W**

Designed to accept one stretcher bound casualty or two walking wounded with space for Paramedic assistance  
2 Water Fed Hand Held Shower Sprays (supplying between 2 and 12 litres per minute per Spray)  
Supplied in 0.50 m3 Canvas Bag  
Weight Approx 40 kg  
Dimensions: L 2900 mm - W 1900 mm - H 2300 mm  
Product Code: 8000502655





## DECONTAMINATION SHOWER SYSTEMS



DECAS V3

### DECAS V3

Separate Shower Cubicles  
Designed to accept males, females and casualties separately  
2 Water Fed Hand Held Shower Sprays per cubicle  
(supplying between 2 and 12 litres per minute per Spray)  
Supplied in 1.00 m3 Canvas Bag  
Weight Approx 120 kg  
Dimensions: L 5500mm - W 2900 - H 2300mm  
Product Code: 8000499596



DECAS X2 / T

### DECAS X2 / T

4 Trigger Operated Guns (6 function)  
2 casualty unit with paramedic work space.  
Disposable Liner option.  
Supplied in 1.00 m3 Canvas Bag  
Weight Approx 75 kg  
Dimensions: L 2900 mm - W 2900 mm - H 2365 mm  
Product Code: 8000502651

**Pre and Post Decon Packs Available  
Price on application.**



### NBC Unit

Chemical Warfare agent resistant and containment  
2 six function trigger guns  
Disposable Containment / Water system  
Weight Approx 65 kg  
Dimensions 2900mm x 2900mm x 2365 mm height  
Supplied in 1.00 m3 Bag  
Product Code: 8000502788

**Optional Training Liner** in lightweight,  
DuraVent material.  
Training Liner does not include water system.

**NBC Unit  
Shown with NBC  
disposable Liner**



**MD 3 Line Shower / Shelter**

**MD 3 Line Shower / Shelter**

Supplied with ground sheet.  
Shown with optional  
Casualty Conveyor,  
and Body Board.  
Light weight, robust and corrosion  
resistant external frames deploy rapidly  
without the need for inflation



**Waste Water Pump  
and Generator**  
(see Accessories for  
details)



**DECAS V 10**

**DECAS V 10**

Separate male / female / casualty Shower Cubicles.  
2 water fed, hand held Shower Sprays per cubicle.  
Weight 200 kg  
Dimensions: L 542 cm - W 295 cm - H 280 cm  
Product Code: 800050707521

**Forced Air Heater**

Portable Forced Air Heating System  
Supplies continuous warm air to a  
confined space.  
Net Heat Output 25 kW  
Fuel consumption 2,4 kg/h  
Electric Power Supply 110V - 50 Hz  
Weight 67 kg  
Product code PS20046

**High Capacity  
Water Heater**

**High Capacity Water Heater**

Dual Injection Dosatron System for two cleaning agents  
0.2%- 1.5% and 3.0%- 8.0%  
Electric junction box with 110V plug in connection and  
time controlled socket for light management of incidents  
Time controller set at 2 min detergent wash and  
1 min rinse wash.  
Dual Fuel supply running from 2 contained units and 2  
spare back up cans  
Heat 55 degrees F to 95 degrees F in 30 seconds  
Water supply to 50 nozzles ratio over 100L a minute  
Control Gauges



**Forced Air  
Heater**





# SHOWER ACCESSORIES



**Boot bath Decon Basin**  
With disposable Liner  
Weight Approx 10 Kg  
Dimensions 1900 X 1900  
Supplied in 0.25 m<sup>3</sup> Bag  
Product Code: 8000501845

**Boot Bath Decon Basin**

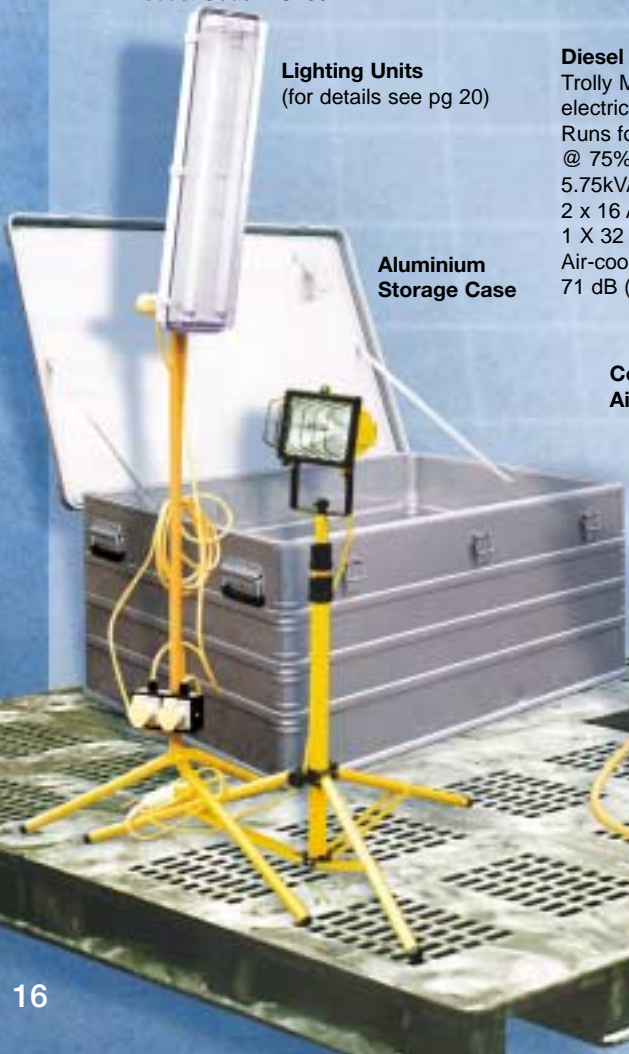


**Raised Flooring**

Decontamination shower flooring  
Keeps contaminated waste water from legs or feet.  
Product Code: PS 20015

**Aluminium Storage Case**

Shower Storage Case  
For convenient transportation  
Dimensions 1150 x 750 x 480  
Weight: 20 kg  
Product Code: PS20021



**Lighting Units**  
(for details see pg 20)

**Aluminium Storage Case**

**Compressed Air Cylinder**

7 Litre Compressed Air Cylinder  
Product Code: PS503735  
Cylinder with adaptor for Decontamination Shower inflation  
Product Code: 8000503547

**Electric Inflator**

Low cost and easy to use  
All weather inflator  
2.5m air hose and nozzle  
Product Codes:  
110 volt PS 506683  
220 volt PS 506526

**Diesel Generator**

Trolley Mounted diesel generator with electric start  
Runs for approx 10 hours @ 75% load on one tank of fuel  
5.75kVA (4.6 kW) continuous power  
2 x 16 Amp 110v sockets  
1 X 32 Amp 110v socket  
Air-cooled single cylinder  
71 dB (A) @ 7 metres

**Compressed Air Cylinder**



**Raised Flooring**

**Detergent Injection System**

Integral on Plyheat 400  
Externally mounted detergent injection system on free-standing frame  
Product Code: PS20012



**Detergent Injection System**

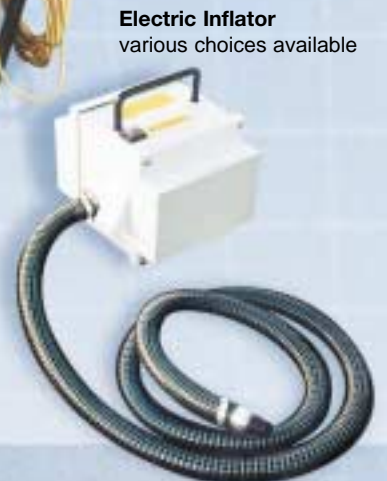


**Plyheat 300**

**Plyheat 300 Heater**

Optional frame mounted Detergent Injection System  
Optional Chimney (as shown)  
Diesel powered unit. Provides warm water within 30 seconds. Thermostatically controlled over 30-70 °C  
Two warm water outlets with isolation valves  
Heating (typically) 60 Ltrs / minute @ 30°C  
Requires 200 watts @ 220-240v (110v option)  
Runs approx 4 hours from 20 Ltrs fuel  
Fuel can provided as standard  
Easily Transported  
Dimensions : L 620mm W 610mm H 950mm  
Weight 74 kg  
Product Codes:  
110volt - PS20022

**Plyheat 400** also available.  
Features as 300 but has integral; detergent injection system, water temp gauge and water pressure gauge.  
110volt - PS20024  
220volt - PS20013



**Electric Inflator**  
various choices available



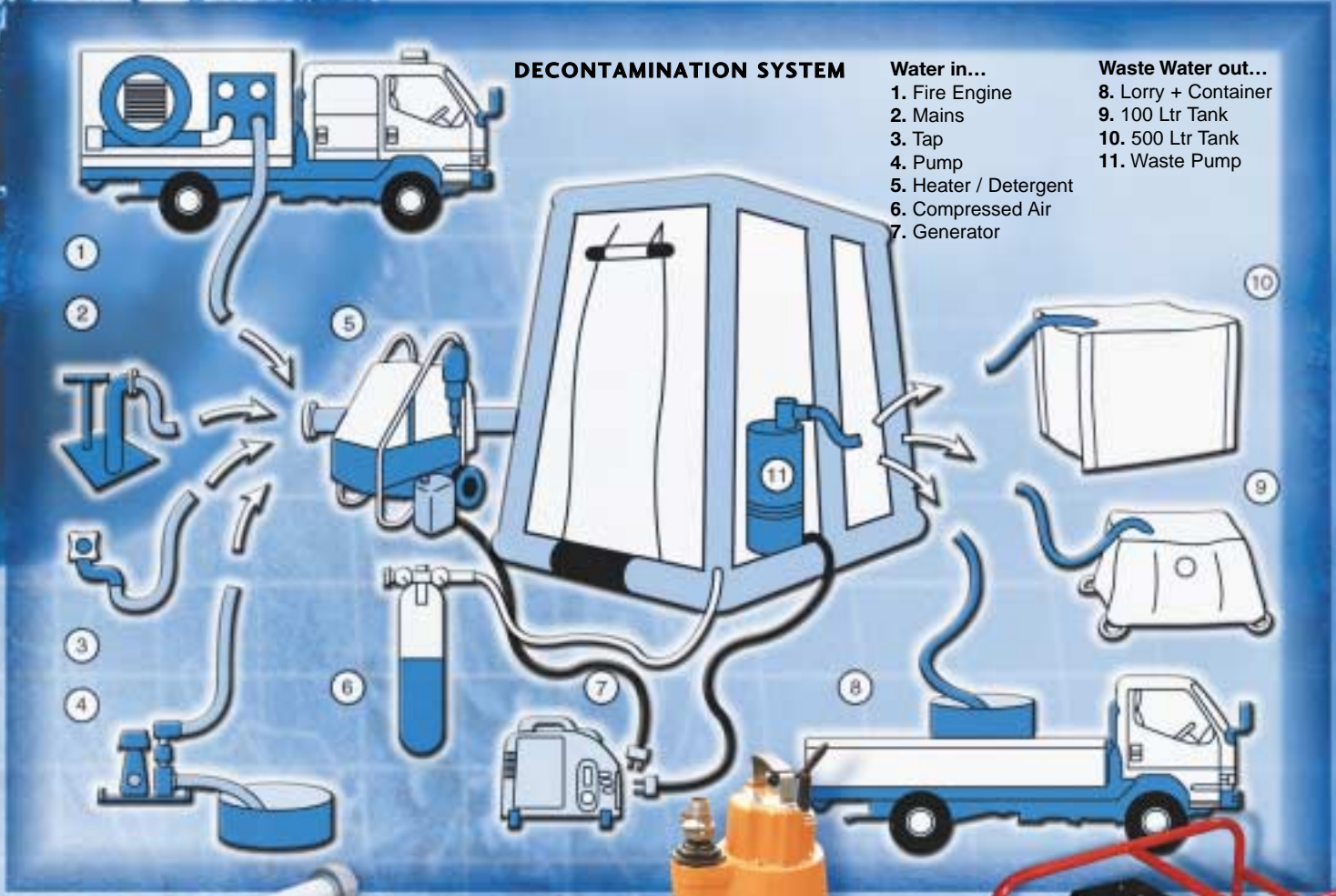
## DECONTAMINATION SYSTEM

### Water in...

1. Fire Engine
2. Mains
3. Tap
4. Pump
5. Heater / Detergent
6. Compressed Air
7. Generator

### Waste Water out...

8. Lorry + Container
9. 100 Ltr Tank
10. 500 Ltr Tank
11. Waste Pump



**Waste Water Outlet Isolator Valve**

### Waste Water Outlet Isolator Valve

#### Product Codes / Descriptions:

- PS32678 – Rigid outlet c/w quick snap lock
- PS32684 – Rigid outlet c/w 2.5" BSP thread
- PS497073 – Rigid outlet c/w 1.5" BSP thread
- PS501687 – Rigid outlet c/w 2.5" Male NPT
- 8000502141 – Rigid outlet c/w quick release coupling
- 8000502142 – Rigid outlet c/w 70 mm coupling
- 8000502955 – Rigid outlet c/w 'C' coupling

### Waste Water Pump



#### Waste Water Pump

Floor level suction  
Removes waste water and solids, up to 6mm diameter down to 1mm depth  
Product Codes:  
110volt - PS20018  
230volt -PS20019

### Generator

**Generator**  
4 Kw 110 volt  
2 x 16amp 110volt sockets  
Product Code: PS20023



#### Transformer

110 v – 220 v  
Product Code: PS20017

#### Transformer

#### 1000 Litre Waste Water Bladder Tank

Collection and discard of contaminated water  
Product Code:PS20029

#### 6000 Litre Waste Water Bladder Tank

Product Code PS20048

#### 1000 Litre Waste Water Bladder Tank



**Water Pressure Reducer**

### Water Pressure Reducer

Fully adjustable  
(sample of waste water or inlet hosing shown)  
Product Code: 8000703309

### Waste Water Bladder Tanks

- 100 Litre Product Code:PS 20000
- 500 Litre Product Code:PS 20006



**Waste Water Bladder Tanks**



# MASS DECONTAMINATION SYSTEMS

## MASS DECONTAMINATION SHELTERS

If minutes can save lives, the benefits of our PPS Shelter range are obvious in that they unfold and inflate very quickly. Inflated by either a compressed air cylinder or electric blower they specially designed for use in any emergency or disaster situation, or any situation where time or manpower is of critical importance. Uses of the PPS Shelters can vary from an emergency hospital site and casualty station to a disaster site with a control, waiting and decontamination room.

The many features of the PPS Shelters include easy and immediate assembly, adaptability to a variety of uses, innovative construction and durability of materials. Internal dividers are available, which can be used to make up separate sections inside the shelter. The fixing points with eyelets at easy to reach locations are for versatile partitioning or for hanging light weight equipment.

PPS Shelters combine with the range of PPS Decontamination Showers to provide a highly versatile system capable of dealing with mass decontamination.

## MASS DECONTAMINATION FRAME STRUCTURES (see MD3 Line Shower on adjacent page)

Time, Quality and Durability all count as major factors in the choice of Mass Decontamination systems and this US Patented Framework System has all of these attributes in abundance. Made from corrosion resistant aircraft grade anodised alloy frames, connected in a scissor and quads formation to produce an even square section that has a high strength to weight ratio.

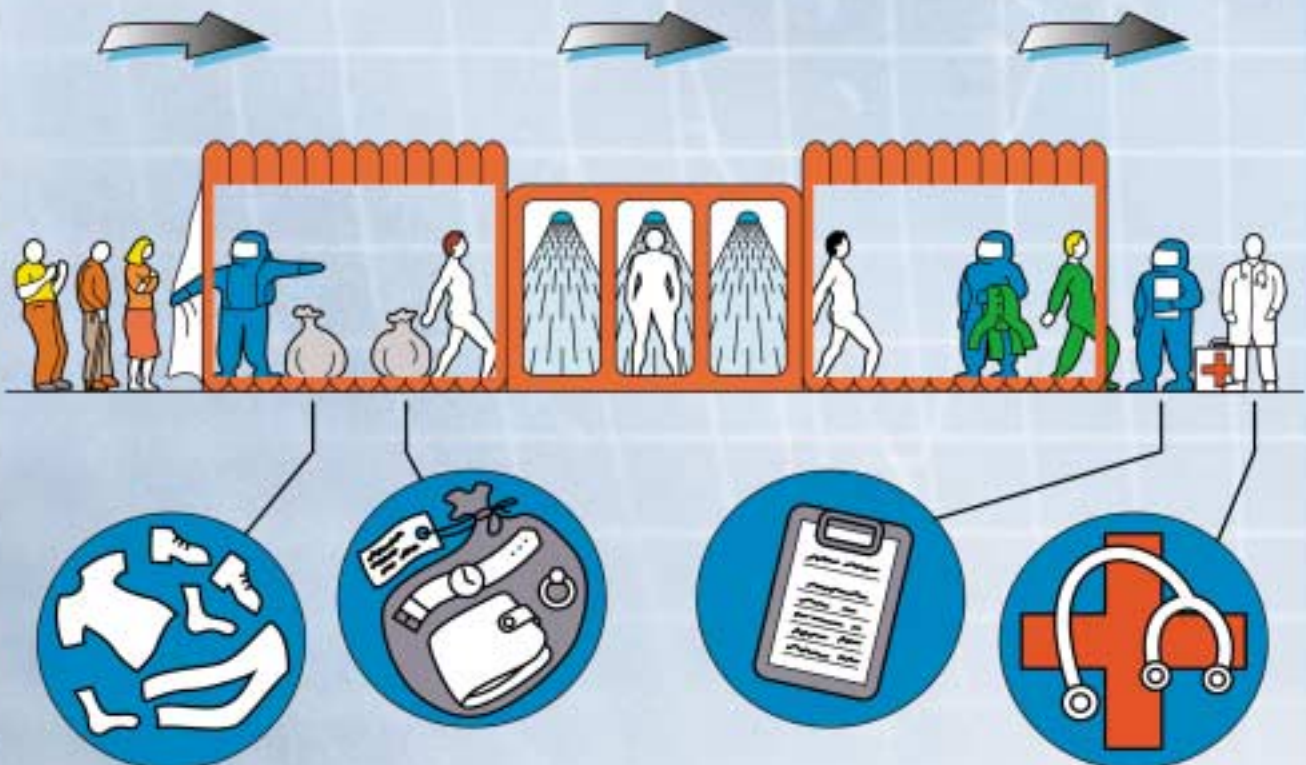
Compact and collapsible for storage which, dependant on system chosen, is deployable in 2 – 8 minutes.

Integral shower booms in a fully self contained unit. Engineered with safety factor of 30% system integrity which keeps the system in operation. Integral internal white light section for maximum vision. Flame retardant throughout.



Mass Decontamination System arranged quickly by combining PPS Shelters and Showers

## Pre and Post Decon Packs Available Price on application.





**Plyshelter XI**

**Plyshelter XI**  
 Shown complete with optional inside shower cabin  
 Also shown with optional Warm Air Heating System  
 Product Codes:  
 Green PS30001  
 Orange PS 30000

**Warm Air Heating System**  
 (See pg 20)  
**Air Heating System**  
 (See pg 20)



1. Guy Ropes
2. Plyshelter window option
3. Inflation/Deflation valve

**Plyshelter XI**  
 Dimensions Packed 120 x 65 x 50 cm  
 Weight 95 kg  
 Floor Space 30 m2

**Plyshelter III**  
 Dimensions Packed 120 x 80 x 45 cm  
 Weight 75 kg  
 Floor Space 27 m2

**Plyshelter IV**  
 Dimensions Packed 120 x 75 x 65 cm  
 Weight 92 kg  
 Floor Space 47 m2

**Plyshelter V**  
 Dimensions Packed 100 x 50 x 32 cm  
 Weight 47 kg  
 Floor Space 10.2 m2  
 Product Codes:  
 Plyshelter III PS30002  
 Plyshelter IV PS30003  
 Plyshelter V PS30004



**Inflatable Shelter Custom Design**

**Inflatable Shelter – Custom Designs**  
 Ideal for casualty registration and dressing etc.  
 Product Code: 8000501733



**MD 3 Line Shower / Shelter**  
 Supplied with ground sheet.  
 Shown with optional Casualty Conveyor, and Body Board  
 Product Code:PS 40010  
 Light weight, robust and corrosion resistant external frames deploy rapidly without the need for inflation



**Inflatable Shelter**

**Inflatable Shelter**  
 Shown above with example of modular, Decontamination Shower Variation.  
 Vehicle Standing Pads ensure secure placement.  
 Weather proof, even in arctic conditions.  
 Flame and water resistant with UV inhibitor  
 Dimensions 3.6M. by 3.6M



**Inflatable Shelter**



# SHELTER ACCESSORIES



### Plyshelter Lighting Units

Energy saving 8000 hour lifespan  
Advise 2 per shelter  
Product Code: PS30011

### Diesel Generator

Trolley Mounted diesel generator with electric start  
Runs for approx 10 hours @ 75% load on one tank of fuel  
5.75kVA (4.6 kW) continuous power  
2 x 16 Amp 110v sockets  
1 X 32 Amp 110v socket  
Air-cooled single cylinder  
71 dB (A) @ 7 metres

### Lighting Units

Shelter / Shower lighting units  
Supplied complete with tripod  
Encapsulated twin 58W fluorescent tubes  
Twin 110V outlets  
Height: 1.2 M  
IP67 weatherproof  
Product Code: PS20016

Lighting Units

### Petrol Generator

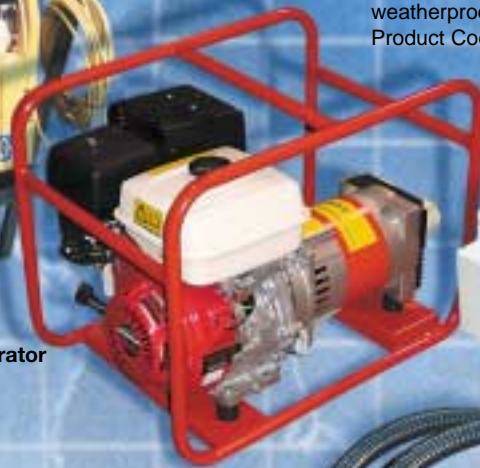
Frame mounted petrol driven generator.  
Runs for approx 3.5 hrs on 1 tank of fuel  
4kW 110 Volt with 2 x16 amp weatherproof 110volt industrial sockets  
Product Code: PS20023



Transformer



Generator



Electric Inflator



Plyshelters Guy Rope Pegs and Repair Kit

### High-Volume Inflator

Corrosion resistant  
Robust  
Reduced Noise Level  
Flame Retardant Materials  
Light Weight  
Product Code: PS30012



High-Volume Inflator

### Transformer

3 kVA rated  
Weatherproof  
Portable  
240v in / 110v out  
Product Code: PS20017

### Forced Air Heater

Portable Forced Air Heating System  
Supplies continuous warm air to a confined space.  
Net Heat Output 25 kW  
Fuel consumption 2,4 kg/h  
Electric Power Supply 110V - 50 Hz  
Weight 67 kg  
Product code PS20046

### Casualty Conveyor

Available in 4 different lengths  
Collapses into compact size for storage or transportation  
Product Codes  
2.44 m. (8 ft) PS40005  
3.04 m. (10 ft) PS40006  
3.66 m. (12 ft) PS40007  
4.88 m. (16 ft) PS40008  
Casualty Board PS40011

### Electric Inflator

Low cost  
Easy to use  
All weather inflator  
2.5m air hose and nozzle  
Product Codes:  
110 volt PS 506683  
220 volt PS 506526



Forced Air Heater

Casualty Conveyor



## SPECIAL PRODUCTS

### Isolators

PPS has for many years been involved in manufacturing a range of isolation and containment products for specific applications within the nuclear, biological and pharmaceutical industries. Having ISO 9001 accreditation, supported by the latest CAD design facilities and employing highly flexible manufacturing techniques, we are able to fulfil your isolation / containment requirements either as a one-off or limited production run. Examples of specialist products manufactured in PVC or advanced materials include the following:

### Flexible Film Isolators

Protects products or plant from external atmospheric or human contamination, or vice-versa. Can be manufactured to any size or shape from PVC or other materials. Can be transparent to allow easy viewing. Can include RF welded fixed or removable arm sleeves or half suits, allowing operator access to isolator contents without fear of contamination.

### Airlock Chambers

Inflatable airlock system is light, very portable and easy to erect. Triple chamber allows 'dirty entry clean exit' procedure. Suitable for applications in asbestos industry. Can be deployed ready for use within 2 - 3 minutes. Can be decontaminated and reused on a continuous basis.

### Evacuation Tents

Supplied to Nuclear Industries for emergency evacuation procedures. Can be linked to provide multi compartments, or safe passage from risk to safe areas. Flexible entry / exit port designs available to suit your requirements. Crystal clear window panels also available.

### Manipulator Gaiters

Used to protect robot manipulator arms from contamination. Commonly used in the nuclear industry. Can be designed to accommodate complex universal joints or extendable hydraulic arms.

PPS offer a full design, development, manufacture & supply service. One-off or limited production runs available.

## DISTRIBUTION NETWORK INTERNATIONAL

Distributors are listed alphabetically by location. PPS has a broad network of overseas distributors. Please contact us or visit our website for further information about our representative office in your region.

### **Belgium**

Louis Smekens  
Alindus bvba  
Wijngaardveld 13  
9300 Aalst  
Belgium  
Tel 0032 537 85697  
Fax 0032 537 76030

### **Belgium**

Carbone+  
Zoning Industriel  
Tournai Quest  
Rue de la Grande  
Courtoure 1B 7522 Tournai  
Belgium  
Tel 0032 6984 1717  
Website  
www.carbonplus.be

### **Czech Republic, Poland & Slovakia**

Mr Stanislav Boucek  
ReoAmos s.r.o.  
Zonfinska 12  
702 00 Ostrava  
Czech Republic  
Tel 00420 69610 1030  
Fax 00420 69610 1031  
Website www.reoamos.cz

### **Denmark**

Kongstad Safeman  
Kim Fagerberg A/S  
Ostre Gjesingvej 19  
DK-6715 Esbjerg N  
Denmark  
Tel 0045 7611 5000  
Website  
www.kongstad-safeman.dk

### **France**

Daniel Boivin  
Nucleec S.A.  
Z.I. Pariwest  
5 Avenue de Gutenberg  
78312 Maurepas Cedex  
France  
Tel 00331 30051300  
Website www.france-  
securite.fr

### **Germany/Austria/ Switzerland**

Thomas Geier  
Handelsvertretung  
Munstermannstrasse 45  
D-45357 Essen  
Germany  
Tel 0049 201 2699914  
Web site  
www.ppsgb.com

### **Hong Kong**

Andy Chan  
Safetech Limited  
Block C Unit 11-12 17/F  
Wah Lok Industrial Centre  
Shan Mei Street  
FO Tan  
Shatin N.T. Hong Kong  
Tel 00852 2687 4038  
Website  
www.safetech.com.hk

### **Ireland**

Dermot Healy  
M A Healy & Sons  
Wexford Road  
Arklow  
County Wicklow  
Ireland  
Tel 00353 402 32116  
Website www.mahealy.ie

### **Israel**

Ilan Shalev  
Amos Gazit Limited  
5 Odem St  
Petach-Tikva  
P O Box 7700  
Israel  
Tel 00972 392 50013  
Website www.gazit.co.il

### **Italy**

Bai Tecnica Srl  
Via Degli Artigiani, 24/26  
25021 Bagnolo Mella  
Brescia  
Italy  
Tel 0039 030 6821860  
Website www.baitecnica.it

### **Japan - Osaka**

S. Hayashi  
Cornes & Company Ltd  
1-13-40 Nishi Honmachi  
Nishi-Ku  
Osaka 550-0005  
Japan  
Tel 0081 665 321015  
Website www.cornes.co.jp

### **Japan - Tokyo**

K. Nishioka  
Cornes & Company Limited  
3-5-1 Shiba  
Minato-Ku  
Tokyo 105-0014  
Japan  
Tel 0081 357 301632  
Website www.cornes.co.jp

### **Korea**

Koan Namkung  
Godo Engineering Ltd  
142-5 Yeonhee  
2 Dong Seodaemun  
Gu Seoul Korea  
Zip 120-112  
Tel 0082 2314 11236  
Fax 0082 2314 11270  
Website www.godoeng.co

### **Malaysia**

Mazlan Omar  
TMR Alam Sdn Bhd  
G-9 Impian Kota  
Jalan Kampung Attap  
50460 Kuala Lumpur  
Malaysia  
Tel 0060 3227 35200  
Fax 0060 3227 35171

### **Netherlands**

Paul van Valkenhoef  
Hutter Ceiligheid bv  
Kruisweg 763  
3132 NG Hoofddorp  
Netherlands  
Tel 00312 065 33400  
Website www.hutter.nl

### **N. Ireland**

Peter Nelson  
W J Nelson & Sons Limited  
Fashoda Street  
Grove Street East  
BELFAST  
Northern Ireland BT5 5EX  
Tel 02890 45602

### **Pakistan**

M D Arif  
H C Arif & Company  
P O Box 12742  
B/6 Karachi 75400  
Pakistan  
Tel 0092 214 528609

### **Singapore**

Mr Daniel Cheah  
Force 21 Equipment PTE  
Ltd  
61 Kaki Bukit Ave 1  
Shun LI Ind Park  
02-24 S (417943)  
Singapore  
Tel 0065 6848 4424  
Fax 0065 6848 4434



**Singapore**

Noah Agencies 'N' Marine  
Services PTE Ltd  
43 Kian Teck Drive  
Jurong  
Singapore 628856  
Tel 0065 6266 0788  
Fax 0065 6266 1042  
Website [www.noah.com.sg](http://www.noah.com.sg)

**Singapore**

Joseph Choo  
W H Brennan & Co Pte Ltd  
47 Loyang Way  
Singapore 508739  
Tel 00654 9511  
Fax 00654 5246  
Website  
[www.whbrennan.com](http://www.whbrennan.com)

**South Africa**

Robbie Taitz  
MSA Africa Pty  
83 Heidelberg Road  
Production Park City Deep  
P O Box 83669 South Hills  
2136 Johannesburg  
Republic of South Africa  
Tel 0027 116 232213  
Website  
[www.campbell.co.za](http://www.campbell.co.za)

**Spain**

Gonzalo Adaro de Jove  
Adaro Tecnologia SA  
Marques De San Esteban  
15  
33206 Gijon Spain  
Tel 0034 985 347806  
Website  
[www.adaro-tecnologia.com](http://www.adaro-tecnologia.com)

**Sweden, Norway &  
Finland**

Stefan Berglund  
Procurator Skydd AB  
Kantyxegatan 29  
Box 9504  
S-200 39 Malmo  
Sweden  
Tel 0046 406 903000  
Website [www.procurator.se](http://www.procurator.se)

**Taiwan**

C T Cho  
Nelven CO Limited  
14F-6 No 76 Sec 1  
Fu-Shing S Road  
Taipei Taiwan  
Tel 00886 22721 9770  
Website  
[www.nelven.com.tw](http://www.nelven.com.tw)

**Turkey**

Special Technologies  
Huriyet Mahallesi 279 Sok  
No. 7 D6 Gazi Osamn Pasa  
Istanbul City  
Turkey  
Tel 0090 212 479 8816  
Fax 0090 212 479 8817

**United Arab Emirates –  
Abu Dhabi, Bahrain, Iran,  
Jordan,  
Kuwait, Oman, Qatar  
and Saudi Arabia.**

Shajahan Rawther  
C & V Technologies (C+)  
Dubai  
United Arab Emirates  
Tel 00971 50 450 9639  
Website  
[www.carbonplus.be](http://www.carbonplus.be)

**USA, Mexico & Canada**

Mark Conron  
FSI North America  
861 West Bagley Road  
Berea  
OH 44017  
USA  
Tel 001 440 891 1523  
Website [www.fsinorth.com](http://www.fsinorth.com)



FOR ALL UK SALES ENQUIRIES or PRODUCT INFORMATION

our direct customer line is: +44 (0) 1908 272240

our fax number is: +44 (0) 1908 371605

our email address is: [sales@ppsgb.com](mailto:sales@ppsgb.com)

Or visit our Website: [www.ppsgb.com](http://www.ppsgb.com)

Protection House, Sherbourne Drive, Tilbrook,  
MILTON KEYNES, Bucks, ENGLAND. MK7 8AP  
Tel: +44 (0) 1908 272240  
Fax : +44 (0) 1908 272240  
Email: sales@ppsgb.com  
Website: www.ppsgb.com

## SUPPORT SERVICES

### Product Repairs

RF welding repairs to PVC products.  
Seam sewing and sealing repairs to Hypalon, Neoprene, etc.

### Spares Support

Spares for all products, such as air hoses, exhalation valves, etc.

### Training

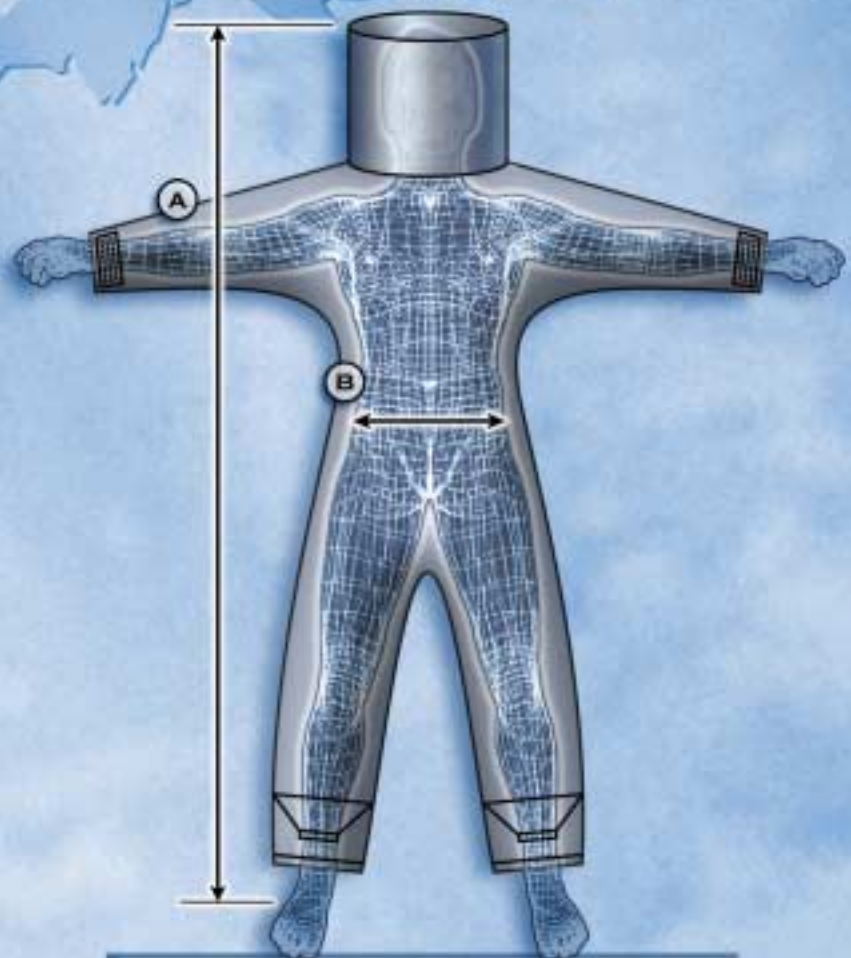
Product training on site, or at our Milton Keynes offices.  
2 year Certificate of Competency issued on successful completion of training.

### Audits & Inspections

Audits and inspections carried out within UK free of charge for existing customers.  
Provides assurance to customers that their PPS PPE complies to current safety standards, and that all equipment is safe to use.

### Air Testing

Breathing air purity testing available on demand within UK.  
Tests ensure that customers breathing air supply conforms to BS4275.



## SUIT SIZE CHART

SIZE	HEIGHT (A)	WAIST (B)
S	1475-1600	765-940
M	1600-1730	940-1120
L	1730-1830	1120-1195
XL	1830-1985	1195-1270
XXL	1985-2065	1320-1450