



The TrellTent[®] shower and decontamination system

General

The TrellTent[®] shower and decontamination system is a spacious, quick erectable system for decontamination of chemically contaminated personnel or for normal showering. The area in the shower tent is 14 m². Fully expanded with one undressing tent type TrellTent 1/2 and one dressing tent type TrellTent 2/2 together with the 6 showers in the shower tent it offers the perfect choice when high capacity decontamination is required. The well proven rigid TrellTent[®] system with inflatable ribs and the possibility to quickly connect the different units are well known features of the TrellTent[®] system.

The water system consists of one Water Feeding pump, type VP or VPHZ, which takes the water from different public water systems or from a portable water container. One mobile heater for the water, type Flow Heater DH6, which is a diesel or petrol operated flow heater. A second pump is a drainage pump for the contaminated water, which pumps the water from the tent into a wastewater container. The two containers are of flexible design made of PVC coated fabric and they come in sizes from 1200 litres to 10 000 litres. Finally one air fan, type Air Heater ZHWL, for ventilation and heating. This is a water / air heat exchanger which takes the water from the Flow Heater. All this is connected together with special hoses of length 2,5 m, 5,0 m and 7,5 m, which are heat resistant. The couplings used are of type STORZ couplings. This is a symmetrical, no male / female side, quick connection coupling for both suction and delivery. The shower device has 6 water nozzles and one hand held shower.

Electrical contacts are according to European Standard.



Articles which can be included in the system:

	Page
1 - TrellTent [®] 1/2 DS	3
2 - TrellTent [®] 2/2	4
3 - TrellTent [®] 1/2	4
4 - Flow Heater type DH6	4
5 - Water Feeding Pump type VP	5
6 - Water Feeding Pump type VPHZ	6
7 - Drainage Pump type EP	7
8 - Air Heater ZHWL	8
9 - Water Containers	9
10 - Hoses	10
11 - Layout drawing	11
12 - Article numbers	12



1 - TrelITent[®] 1/2 DS

The TrelITent[®] 1/2 DS is a 2 rib, 2 doors tent, designed to collect the contaminated water. It is equipped with 6 jets from above and 1 hand shower. The shower area can, by using a curtain, be divided into two sections. The two windows give a bright atmosphere. The windows are equipped with mosquito nets and are possible to open for better ventilation. The tent is in less than 5 minutes inflated by a high capacity fan.

Shape:	The tent has a half circle design, with a radius of 2.6 m, with good resistance against wind, snow and heavy rain.
Dimensions:	L= 2,65 m, W= 5,2 m, H= 2,6 m.
Floor area:	14 m ² .
Weight:	100 kg.
Fabric walls:	PVC coated polyester fabric, weight 755 g/m ² .
Fabric floor:	PVC coated polyester fabric, weight 735 g/m ² .
Colour:	The outside is olive green or yellow. The inside is light green for natural, neutral colour reflection.
Floor:	For optimal stability the tent has an integrated floor which is permanently welded and sewn to the walls. The door openings have "thresholds" to contain the water inside the tent.
Ribs:	The tent has 2 inflatable ribs, diameter 350 mm which are fixed attached to the tent fabric. The pressure is 18 kPa. The ribs have separate inner tubes.
Spacing collar:	The tent has 1 spacing collar in the centre and 2 pipes for water distribution on the sides.
Doors:	The doors have a width of 1,8 m and a height of 2,1 m. The zippers are made of metal.
Window:	The windows have mosquito net with transparent windows and black out flaps.
Shower device:	One set consists of two pieces of divisible pipes made of aluminium. Shower strain with 45° shower angle. The water flow is 10 l/min at 4,5 bar. Ball valve for shutting off shower strain. The connection of the two pipe sections is possible to tighten without tools. The coupling on the inlet hose is of type STORZ D 1001 25 DS acc. to DIN 14301, a quick connection symmetrical suction and delivery coupling, made of aluminium. The hand shower, in metal and possible to shut off, has a water flow of 15 l/min at 4,5 bar.
Drains:	The tent is equipped with 4 drainage. Two of these with quick couplings for connection of drainage pump.
Attachment points:	Each rib has attachment points for hanging of equipment.

2 - TrellTent[®] 2/2

3 - TrellTent[®] 1/2

Please see separate information.

4 - Flow Heater type DH6



The flow heater is a two-stage heater that at the same time supplies two different outlets with thermostatically controlled water. It can be carried by means of 4 handles or driven by means of 2 wheels. It uses either diesel oil or petrol for heating plus electricity.

Output:	70 kW or 105 kW
Water throughput:	500 - 3000 l/hour
Temperature increase:	30°C at 3000 l/h
Maximum temperature:	95°C
Type of burner:	2-stage oil burner with automatically regulated airflow
Type of fuel:	Diesel or petrol
Fuel consumption:	Min. 9,0 l/h - Max. 12,5 l/h
Exhaust characteristics:	CO ₂ – 11,5 %, Smoke spot number 0, temp. Approx. 180°C
Electrical data:	220 V 50 Hz alternatively 110 V 60 Hz,
Power consumption:	Max. 600 W
Protection:	IP43
Coupling:	Water – D-couplings
Dimensions:	L: 550 mm, W: 550 mm, H: 1300 mm (without wheels and exhaust pipe)
Weight:	158 kg

Trelleborg Protective Products AB

P.O.Box 1520, SE-271 00 Ystad, Sweden. Street address: Dragongatan 18.
 Phone: +46 411 679 40. Fax: + 46 411 152 85, 181 70. E-mail: protective@trelleborg.com
 Internet: www.trelleborg.com/protective. Registered No: 556010-7145

5 - Water Feeding Pump type VP



The Water pump is used for delivery of water to the showers in case a public water system not is available and when no Air Heater is used. It is of type horizontal centrifugal pump. It is pressure controlled with switch-on / off pressures at approx. 2,5 and 4,5 bar. The electric cable is equipped with safety plug.

Capacity:	Approx. 5000 l/ hour
Pressure:	Max. 5 bar
Voltage:	220V/230V 50 Hz or 110 V 60 Hz
Power consumption:	Approx. 2.300 W
Protection:	IP 55
Measurements:	Approx. L= 600 mm, W= 300 mm, H= 600 mm
Weight:	Approx. 36 kg
Coupling:	D – couplings

6 – Water Feeding Pump type VPHZ



To be used when the Air Heater ZHWL is used. It has the same characteristics as the VP pump plus a circuit to operate the Air Heater.

Capacity:	Approx. 5000 l/ hour
Pressure:	Max. 5 bar
Voltage:	220V/230V 50 Hz or 110 V 60 Hz
Power consumption:	Approx. 2.300 W
Protection:	IP 55
Measurements:	Approx. L= 600 mm, W= 600 mm, H= 600 mm
Weight:	Approx. 52 kg
Coupling:	D – couplings

7 - Drainage Pump type EP



The Drainage pump is used for pumping the water from the tent into a wastewater container or the sewage system if the water is not contaminated. It is of type rotation pump in stainless steel with integrated water level switch. This allows the pump to work automatically as soon as the water in the shower tent has reached a level of 40 mm.

Capacity:	Max. 4000 l/h
Pressure:	Max. 0,8 bar
Power supply:	220V/50Hz or 110 V / 60 Hz
Power consumption:	Approx. 600 W
Protection:	IP55
Coupling:	C-coupling at water inlet and D-coupling at water outlet
Dimensions:	L=350 mm, W=260 mm and H= 300 mm
Weight:	9 kg

8 - Air Heater ZHWL



The tents system can be equipped with a Hot Air Heater connected to the flow heater. The Heater is equipped with a fan and operates with the water from the flow heater.

Thermal output:	45 kW at 0°C air intake
Blower:	5 stages, air volume max. 4600m ³ /h
Voltage:	230V/50Hz or 110 V/60 Hz.
Power consumption:	480 Watt
Coupling:	D couplings
Dimensions:	L= 850 mm, W= 600 mm, H= 750mm (without air conduction device)
Weight:	65 kg (without air conduction device)

9 - Water Containers



To be used for storage of fresh or contaminated water. The containers are made of PVC coated fabric and has air outlet valve and connection for hose. The following sizes are available.

Volume: 1200 litre
Size, filled: Approx. L= 2250 mm, W= 1400 mm, H= 650 mm
Coupling: D-coupling
Weight: 8 kg

Volume: 3000 litre
Size, filled: Approx. L= 2900 mm, W= 2400 mm, H= 800 mm
Coupling: D-coupling
Weight: 10,5 kg

Volume: 5000 litre
Size, filled: Approx. L= 3400 mm, W= 2430 mm, H= 1150 mm
Coupling: D-coupling
Weight: 14,5 kg

Volume: 10000 litre
Size, filled: Approx. L= 5500 mm, W= 2600 mm, H= 1000 mm
Coupling: D-coupling
Weight: 24 kg

10 – Hoses



10.1

Between fresh water container, public network, natural water source or air heater ZHWL and water pump VP / VPHZ, also between drainage pump EP and wastewater container.

Length: 5 m
 Diameter: 25 x 5 mm
 Couplings: D-couplings
 Heat resistance: Max. 100°C
 Pressure resistance: Max. 20 bar
 Remark: With no return valve and strainer

10.2

Between flow heater DH6 and water pump VP / VPHZ and flow heater DH6 and shower system.

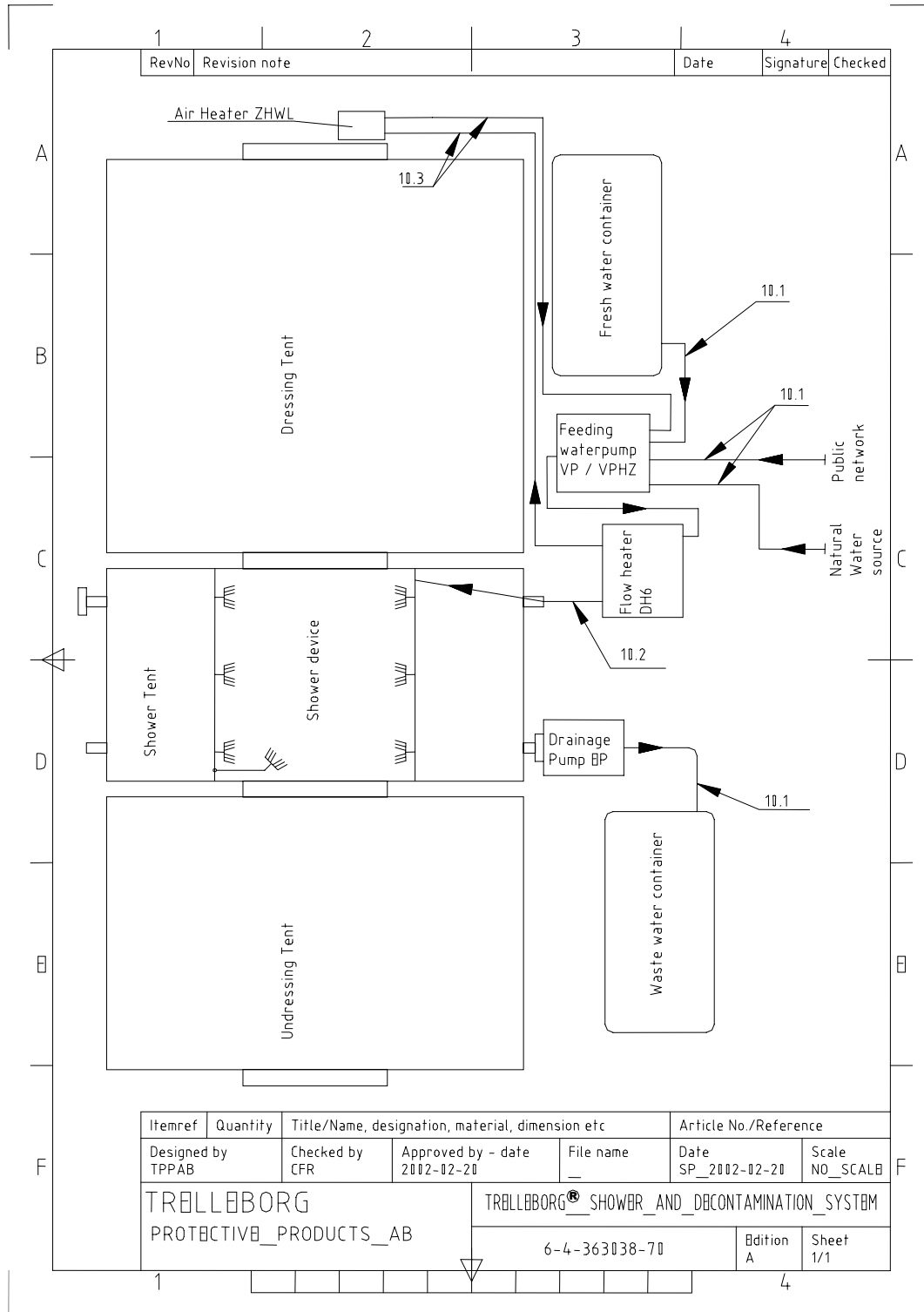
Length: 2,5 m
 Diameter: 25 x 5 mm
 Couplings: D-couplings
 Heat resistance: Max. 100 °C
 Pressure resistance: Max. 20 bar

10.3

Between air heater ZHWL and water pump VP / VPHZ and air heater ZHWL and flow heater DH6.

Length: 7,5 m
 Diameter: 25 x 5 mm
 Couplings: D-couplings
 Heat resistance: Max. 150 °C
 Pressure resistance: Max. 15 Bar

11 – Layout drawing



12 - Article numbers

1 - TrelTent® 1/2 DS	
Olive green/Light green	484012130
Yellow / Light green	484012132
2 - TrelTent® 2/2	
Olive green/Light green	484022030
Yellow / Light green	484022032
3 - TrelTent® 1/2	
Olive green/Light green	484012030
Yellow / Light green	484012020
4 - Flow Heater type DH6	483380201
5 - Water Feeding Pump type VP	483380220
6 - Water Feeding Pump type VPHZ	-
7 - Drainage Pump type EP	483380210
8 - Air heater ZHWL	-
9 - Water containers	
1200 L	-
3000 L	-
5000 L	-
10000 L	-
10 - Hoses	
Acc. to 10.1	483380232
Acc. to 10.2	483380230
Acc. to 10.3	-